



# **SOUTH AUSTRALIAN ECONOMIC INDICATORS**

EMBARGO: 11:30AM (CANBERRA TIME) FRI 2 OCT 1998

## **C O N T E N T S**

	<i>page</i>
Notes.....	2
REVIEW	
South Australian overview .....	3
State accounts .....	3
International accounts .....	5
Consumption and investment .....	6
Production .....	8
Prices.....	10
Labour force and demography .....	13
Incomes .....	16
Financial markets .....	17
Forward outlook .....	20
TABLES	
List of tables .....	23
ADDITIONAL INFORMATION	
Publications source index .....	47

- For further information about these and related statistics, contact Mark Parham on Adelaide 08 8237 7645, or any ABS office shown on the back cover of this publication.

## NOTES

### FORTHCOMING ISSUES

<i>ISSUE</i>	<i>RELEASE DATE</i>
November 1998	2 November 1998
December 1998	1 December 1998
January 1998	24 December 1998



### ABOUT THIS PUBLICATION

*South Australian Economic Indicators* is a monthly publication which contains the latest available data at the time of preparation for a range of statistical series that have been identified as indicators of economic activity in this State. In a number of cases the figures presented are preliminary and subject to revision in subsequent issues.



### CHANGES IN THIS ISSUE

There are no changes in this issue.



### SYMBOLS AND OTHER USAGES

n.a.	not available
n.y.a.	not yet available
*	subject to sampling variability too high for most practical purposes
..	not applicable
0, 0.0	nil or rounded to zero



### ROUNDING

Where figures have been rounded, discrepancies may occur between sums of the component items and totals.



### INFORMATION

More detailed information on each series, including explanatory and technical notes, can be obtained from other Australian Bureau of Statistics publications or alternative data sources. To assist those seeking further information a source publication for each of the series has been documented in the statistical summary.

P. M. Gardner  
Regional Director  
South Australia

# REVIEW

---

## SOUTH AUSTRALIAN OVERVIEW

- State final demand (SFD) increased by 0.6% in the June quarter 1998, up marginally from the March quarter (0.5%) but significantly below the peak of 1.7% in the September quarter 1997.
- The value of merchandise exports, where the final stage of production was in South Australia decreased from \$414.0m in June 1998 to \$385.3m in July 1998 whilst the value of merchandise imports released from Customs control in South Australia was \$331.9m in July 1998, an increase of 5.3% on June.
- The trend estimate for monthly retail turnover indicates an easing in the growth rate, from 1.0 % in February 1998 to 0.4% in July 1998.
- The trend estimate for new motor vehicle registrations increased 3.6% in July 1998 and continues the growth of recent months driven particularly by passenger vehicles.
- The trend estimate at current prices for private new capital expenditure for the June quarter 1998 decreased 2.3% from the previous quarter.
- The trend for total dwelling units approved has risen 4.6% in July to be 29.5% higher than the level of a year ago.
- The Price Index of Established Houses in Adelaide fell 0.3% in the June quarter 1998, while there was a 4.3% increase annually.
- The trend unemployment rate has risen gradually over the past twelve months; up from 9.7% in August 1997 to 10.3% in August 1998.
- In June 1998 a total of 800 working days were lost through industrial disputation.
- The trend estimate for the value of new housing commitments (excluding alterations and additions) increased to \$279.0m in July 1998.

## STATE ACCOUNTS

NOTE: Some of the information previously included in *Australian National Accounts: State Accounts* (Cat. no. 5242.0) is now provided in a new Standard Data Service entitled *Australian National Accounts: Quarterly State Details* (Cat. no. 5206.0.40.001). This information is available quarterly, usually within one week of the release of the quarterly Australian National Accounts.

### Trend (Constant prices)

State final demand (SFD) increased by 0.6% in the June quarter 1998, up marginally from the March quarter (0.5%) but significantly below the peak of 1.7% in the September quarter 1997. The national trend has slowed for the third consecutive quarter, down from its peak of 1.6% in the June quarter 1997 to 0.4% in the June quarter.

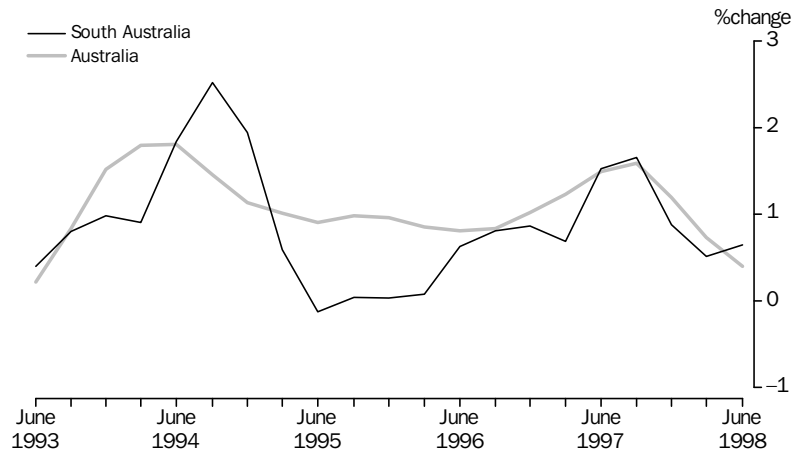
Growth through the year to June quarter 1998 was 3.7% compared with the national rate of 4.0%.

Contributing to the growth of SFD was a 1.4% increase in private final consumption expenditure, offset by a 1.4% fall in the growth rate of private gross fixed capital expenditure. Public final demand recorded zero growth in the June quarter after three consecutive quarters of negative growth.

Trend (Constant prices) *continued*

Private final consumption expenditure rose 1.4% compared to the national rate was 0.8%. Growth through the year to June quarter was 6.1%, significantly higher than the national rate of 4.6%. South Australia has been marginally ahead of the national rate for the past four quarters.

State final demand: **Trend** (Constant prices)(a)



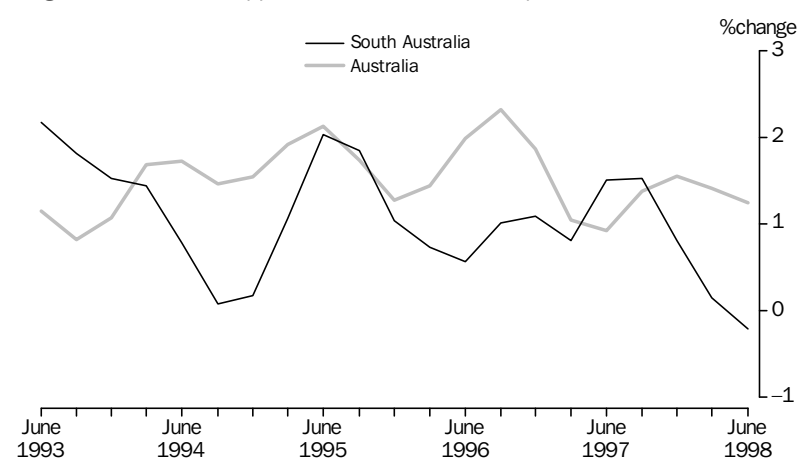
(a) Quarterly changes

Trend (Current prices)

Wages, salaries and supplements fell by 0.2% in the June quarter 1998 continuing the trend of a declining growth rate evident from the September quarter 1997. The national rate is also slowing with a 1.2% increase in the June quarter (1.4% in the March quarter).

Growth through the year to June quarter was 2.3% compared with the national rate of 5.7%.

Wages, salaries and supplements: **Trend** (Current prices) (a)



(a) Quarterly changes

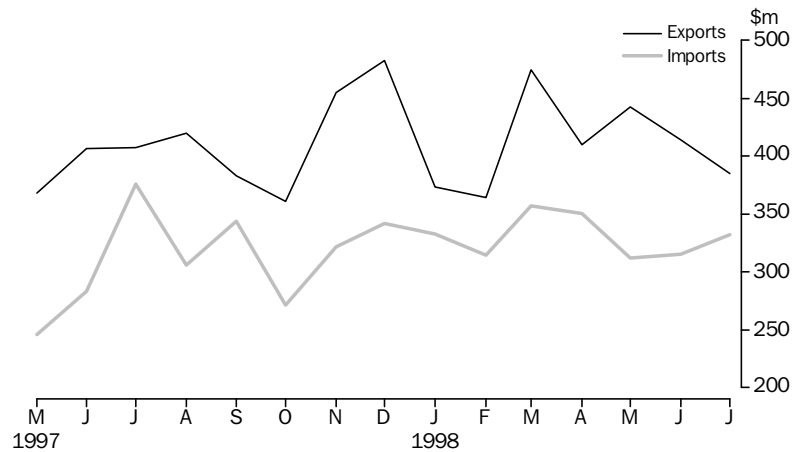
INTERNATIONAL ACCOUNTS

Merchandise exports

The value of merchandise exports, where the final stage of production was in South Australia decreased 6.9% in July 1998 when compared with last month. The value of exports fell from \$414.0m to \$385.3m in this period. Decreases occurred in meat, cereals, wine, metals and petroleum. Increases occurred in wool, machinery, fish and vehicles which contributed the largest increase, rising \$19.8m to \$44.1m in July 1998.

The greatest fluctuation in the value of exports to destinations was to the East Asia region where exports to Japan and China fell \$10.2m and \$10.9m respectively. Total exports to this region fell \$30.2m in July 1998. Exports to New Zealand, the United Kingdom and Hong Kong all increased marginally over the previous month.

Merchandise exports and imports



Merchandise imports

The value of merchandise imports released from Customs control in South Australia was \$331.9m in July 1998, an increase of 5.3% on June 1998 but an 11.8% decrease on July 1997. Increases occurred in food, petroleum, textiles, metals, machinery, vehicles and other manufactured goods. A decrease occurred in chemicals.

CONSUMPTION AND INVESTMENT

Retail turnover

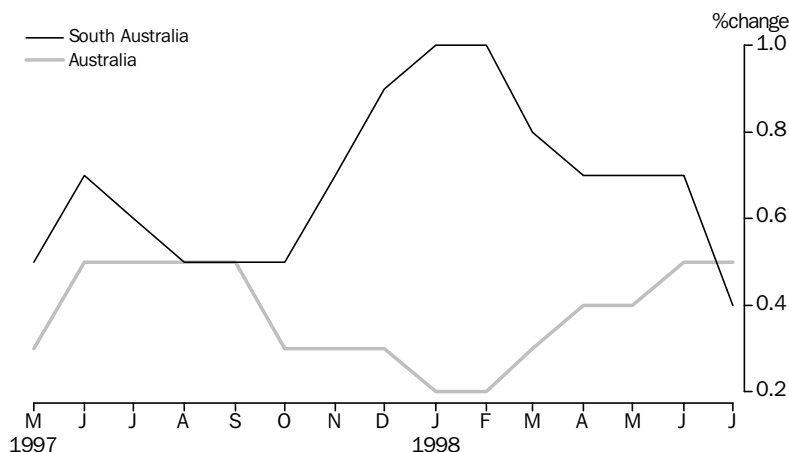
The trend estimate indicates an easing in the growth rate, from 1.0% in February 1998 to 0.4% in July 1998. Increases were recorded in food retailing, clothing and soft goods, recreational goods and hospitality and services while department stores, household good retailing and other retailing continue to trend downwards.

Over the three months to July 1998 trend increases were recorded in the groups of food retailing (1.4%), clothing and soft good retailing (3.0%), recreational goods (4.3%) and hospitality and services (8.9%). Trend decreases were recorded for household good retailing (2.9%) and other retailing (0.5%).

In original terms, South Australian retail turnover for July was \$865.8m, a rise of 6.2% on June 1998 and 7.6% on July 1997.

In July 1998, Australian turnover was \$11,468.6, a rise of 7.0% on the previous month and 5.6% when compared with last year. The South Australian share of the Australian total was 7.5%.

Retail turnover: **Trend**



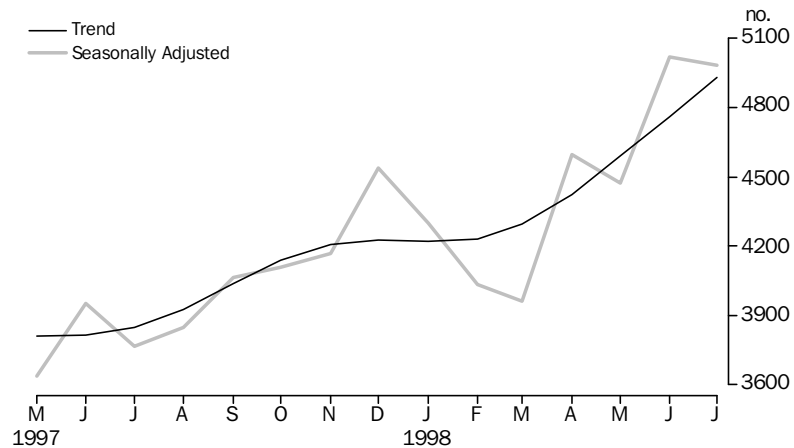
New motor vehicle registrations

The trend estimate for new motor vehicle registrations increased 3.6% in July 1998 and continues the growth of recent months driven particularly by passenger vehicles.

In original numbers there were 5,087 vehicles registered during July 1998. The leading makes of passenger vehicles registered were Holden (924), Ford (766), Mitsubishi (706), Hyundai (513), Toyota (492), Nissan (147) and Honda (87).

In July 1998 total Australian new motor vehicle registrations (71,657) in original numbers were 19.1% higher than a year ago.

New motor vehicle registrations



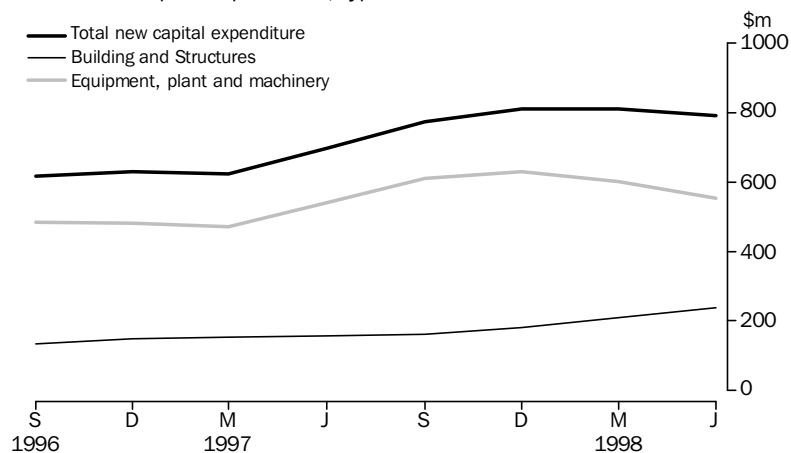
Private new capital expenditure

The trend estimate at current prices for private new capital expenditure for the June quarter 1998 decreased 2.3% from the previous quarter. Expenditure on buildings increased by 13.3% and equipment decreased 8.1%. Since June quarter 1997, total expenditure has increased by \$94m (13.5%). Expenditure on buildings has increased by \$81m (51.6%), and equipment has increased by \$12m (2.2%).

In original terms, private new capital expenditure for the June quarter 1998 was \$792m, an increase of 9.8% on the previous quarter. Equipment, plant and machinery accounted for \$551m and buildings and structures \$241m.

Total expenditure (original terms) for the financial year 1997-98 was \$3,183m, an increase of 23.4% on the previous year, mainly due to a large increase by the mining industry which contributed \$1,370m. Manufacturing and other selected industries showed decreases over the previous year.

Private new capital expenditure, type of asset: **Trend**



Tourist accommodation

The number of rooms and units available in licensed hotels, motels, guesthouses and serviced apartments with 15 or more rooms or units increased 0.2% in the March quarter 1998 compared with the March quarter 1997. The room occupancy rate increased from 57.1% to 59.2%. Takings for all accommodation types increased when compared with March quarter 1997, with total takings increasing from \$40.5m to \$44.0m. Average takings per room night occupied rose from \$81.20 to \$85.10.

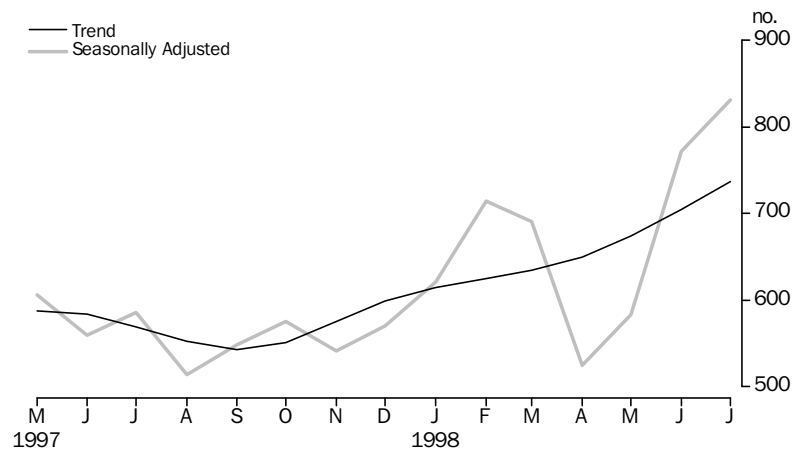
PRODUCTION

Building approvals

The trend for total dwelling units approved has risen 4.6% in July 1998 to be 29.5% higher than the level of a year ago. In original terms, the total number of dwellings approved for July 1998 was 921, up 13.7% from the previous month and 45.3% higher than at the same time last year. The number (261) of other dwelling units approved for July was the highest since December 1992.

For Australia, the trend for total dwelling units continues to grow and is 15.4% higher than last year. However, the monthly growth rate has eased over recent months to 0.2% this month. The trend for other dwelling units continues to grow, with current levels 21.5% higher than a year ago. In original terms, South Australia accounted for 6.4% of the total dwelling units approved in Australia during July 1998.

Dwelling units approved



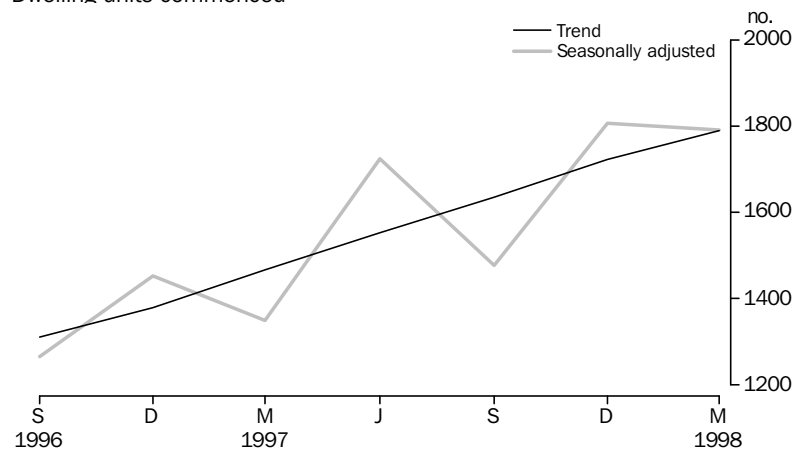
The total value of building approved in July 1998 for South Australia was \$130.6m of which \$78.6m was new residential building and \$40.2m non-residential building. Other business premises and hotels, motels and other short term accommodation categories were the only major contributors (\$16.0m and \$13.4m respectively) to this value for July 1998.



Building activity

For the March quarter 1998, the trend for the total number of dwelling units commenced in South Australia rose by 3.9% and was 22.0% above the level of a year earlier. Corresponding figures for Australia were 3.8% and 15.7%. In original terms, 1,653 dwellings were commenced in the State during the March quarter, a decrease of 253 or 13.3% from the previous quarter. The March quarter level represents 4.8% of all dwelling units commenced in Australia.

Dwelling units commenced

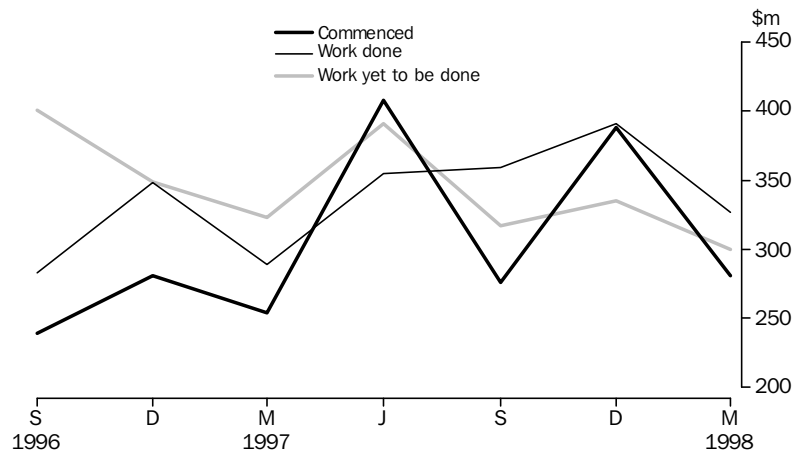


The total value of building work commenced during the March quarter 1998 fell by 27.4% to \$281.3m. Both the value of new residential building and non-residential building recorded decreases of 16.4% and 47.1% respectively.

The total value of building work done during the March quarter 1998 fell by 16.3% to \$327.2m compared with a 9.8% decrease nationally. However, compared with the March quarter 1997, South Australia recorded a 13.1% increase in total building work done while the increase nationally was 9.7%.

The total value of building work yet to be done at the end of March 1998 was \$300.3m. This was a decrease of 10.3% on the figure for December 1997 and only accounted for 2.4% of the corresponding national figure.

Value of building activity



Engineering construction

The value of engineering construction work done for the March quarter 1998 rose by 1.2% to \$302.8m compared with a national increase of 5.3%. The March quarter level represents 6.9% of the national figure, compared with 7.2% for the December quarter. In South Australia, work commenced during the March quarter rose by 2.9% to \$213.2m, compared with a national fall of 0.4%. As a result, the State's proportion of the national total of commencements rose slightly to 5.3% for the March quarter 1998. Roads, highways, subdivisions and water storage and supply categories contributed to almost half (\$102.2m) of the value of work commenced for this period.

PRICES

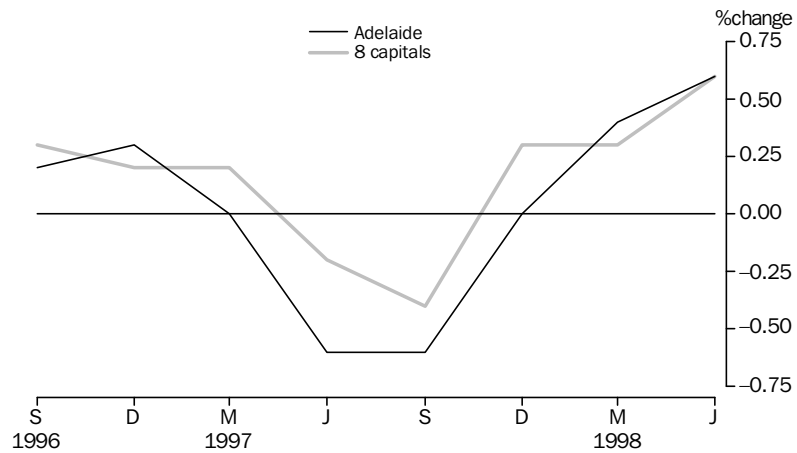
Consumer Price Index

The Consumer Price Index (all groups) in Adelaide rose 0.6% between the March quarter 1998 and June quarter 1998. The groups which contributed most to the overall increase this quarter were health and personal care, and food. All groups contributed to this quarter's increase except tobacco and alcohol which contributed a small decrease.

In annual terms, the index has shown a 0.4% increase between June 1997 and June 1998.

The Consumer Price Index for the weighted average of eight capital cities rose 0.6% from the previous quarter and rose 0.7% compared with last year.

Consumer price index

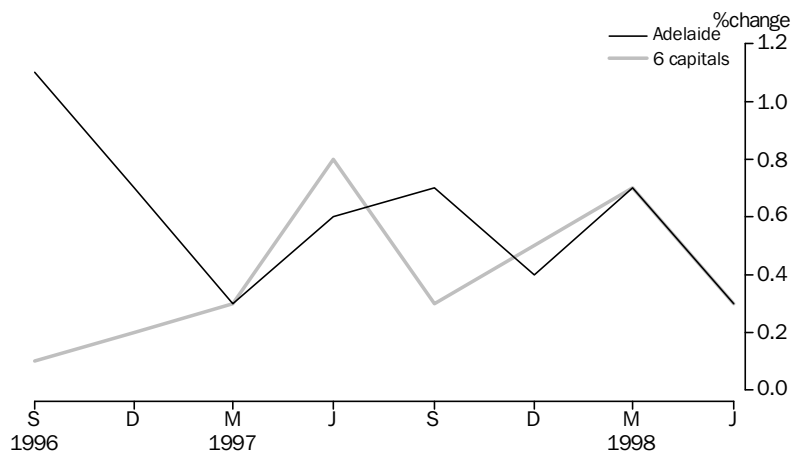


House building materials index

The Price Index of Materials used in House Building rose by 0.3% for the June quarter 1998 in Adelaide. Increases in the price of aluminium windows and doors and insulation were the main contributors to the rise, being partly offset with decreases in structural timber. The weighted average of the six State capitals recorded a 0.3% increase in the same period.

Adelaide recorded a rise of 2.1% in the Index for the 12 months to June quarter, with the weighted average of the six State capitals recording a 1.7% increase.

Materials used in house building

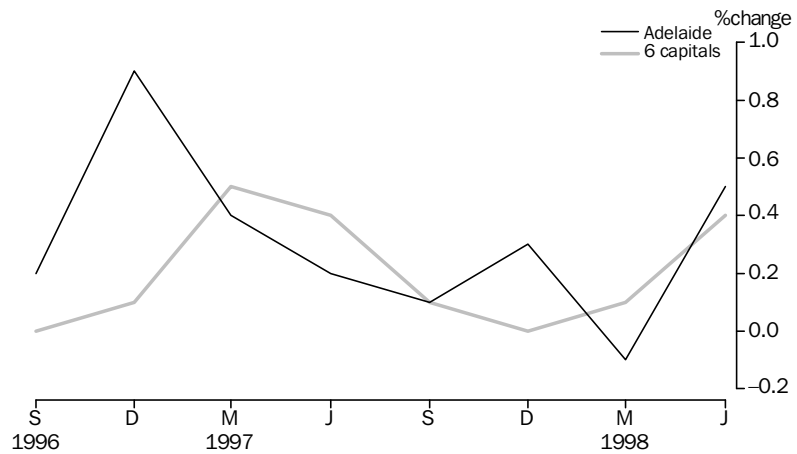


**Non-house building materials index**

The Price Index of Materials used in Building other than House Building rose 0.5% in the June quarter. Materials to record increases were aluminium windows, re-inforcing steel bar, fabric and mesh, and paint and other coatings while small decreases were recorded for clay bricks and non-ferrous pipes and fittings. For the same period, the weighted average of the six State capitals rose 0.4%.

For the 12 months to June quarter 1998, Adelaide recorded a rise of 0.8% in the Index, while the weighted average of the six State capitals showed a 0.5% increase in the same period.

**Materials used in building other than house building**



**House prices indexes**

During the June quarter 1998 the Price Index of Established Houses in Adelaide fell 0.3%, while there was a 4.3% increase annually. Over the corresponding period, the weighted average of the eight capital cities index increased 2.2% and 8.6% respectively.

The Project Home Price Index increased by 0.6% during the June quarter 1998 and 7.0% when compared with the same time the previous year. Nationally, the weighted average of eight capital cities index rose 0.4% from the March quarter and 1.5% from the June quarter 1997.

**Passenger transport cost index**

The Passenger Transport Cost Index measures changes in the costs of operating a public transport passenger bus service in Adelaide. Costs covered include labour costs, leasing charges, registration and insurance, repairs and maintenance, fuel and overheads. The index has been compiled on a quarterly basis from September 1995 with a base of 100.0 in 1993–94. The All Groups index number for June quarter 1998 is 109.8, down from 110.5 in the previous quarter. This fall is due to decreases in the prices of distillate and depot leasing charges.

LABOUR FORCE AND DEMOGRAPHY

Population

At 31 December 1997 the estimated resident population of South Australia was 1,482,869. This was an increase of 1,271 persons from the September quarter and was due to a natural increase of 1,544 persons partly offset by net migration loss of 273 persons.

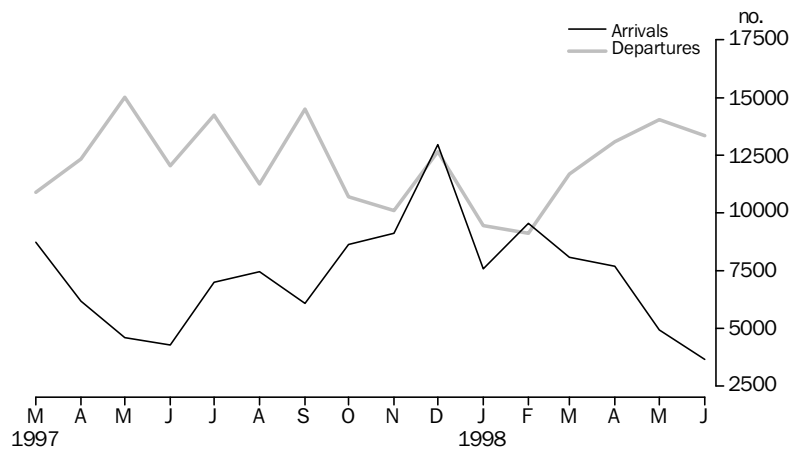
Short-term overseas visitor arrivals

In June 1998 there were 3,647 short-term overseas visitor arrivals to South Australia, a decrease of 26.1% on the previous month. A comparison with the same period last year shows a fall of 14.6%. For the financial year ended June 1998 there were 92,723 visitor arrivals to South Australia, an increase of 9.4% on the previous year. The South Australian proportion of short-term visitors was 1.2% for June 1998 and 2.2% for the year.

Short-term resident departures

There were 13,367 short-term resident departures in June 1998. This represents a decrease of 4.8% from last month and a 10.9% increase on last year. For the year ended June 1998 there were 144,178 resident departures an increase of 6.9% on last year. South Australia accounted for 4.7% of all short-term resident departures in June and 4.8% for the year.

Short-term arrivals and departures

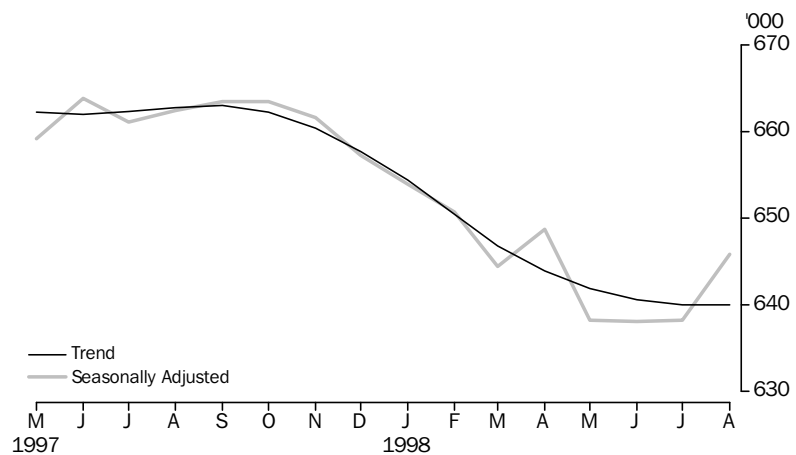


Employment

The trend estimate of employed persons was 640,000 in August 1998, 3.4% lower than the level of one year ago (662,800). Most of this decrease can be attributed to a decline in female employment of 13,600 and in particular part-time employment for females which fell by 7.7% in the 12 months to August 1998.

The trend estimate of full-time employment has risen in August 1998 after a period of decline during the first six months of the year. The August 1998 level of 465,300 was 1.4% lower than the August 1997 estimate. The trend in part-time employment has fallen 1.4% this month after a rise last month but has continued to be well below the levels in 1997, with August 1998, 8.6% below the level reported a year ago.

Employed persons



Labour force participation

The labour force participation rate expresses the labour force (or all employed and unemployed persons) as a percentage of the total population aged 15 and over. It measures the economically productive or active element in the working age population.

The trend estimate of the labour force participation rate in August 1998 was 59.8%. This was the lowest level recorded on the mainland. Nationally, the participation rate for August 1998 was much higher at 63.4%. A combination of factors, including the ageing of the State population, falling birth rates, declining female labour force participation since April 1997, and a growing tendency to undertake post-school education, have contributed to recent falls in the State rate.

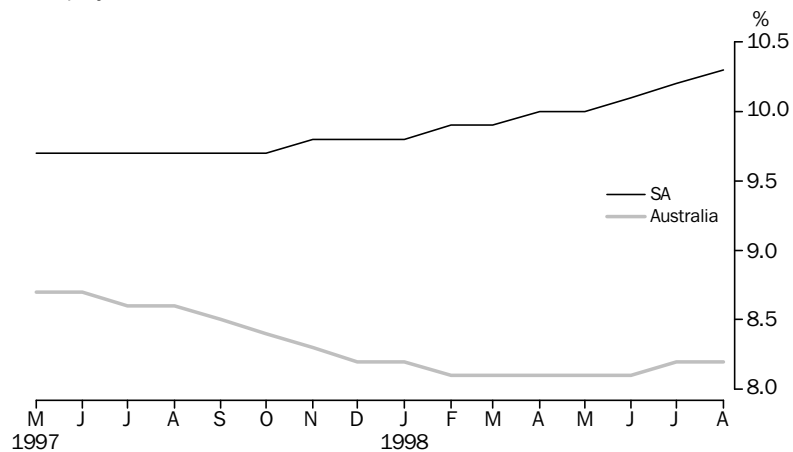
From another perspective, the number of people (aged 15 and over) who were not in the labour force (neither employed nor unemployed) rose by 4.3% to 477,900 in the 12 months to August 1998. Moreover, the current level is 9.6% higher than the estimate of ten years ago (436,100).

**Unemployment**

The trend unemployment rate has risen gradually over the past twelve months; up from 9.7% in August 1997 to 10.3% in August 1998. In contrast, the trend unemployment rate for Australia was 8.2% in August 1998, lower than the 8.6% recorded a year earlier.

In unadjusted, original terms, the teenage full-time unemployment rate has increased from 35.5% in July 1998 to 36.6% in August 1998. The latest result indicates that 8,400 persons aged 15–19 years old were actively seeking full-time work, out of a teenage, full-time labour force of 22,900. However, it does not mean that over 3 in 10 of the State's teenagers are unemployed. The majority of 15–19 year olds were unavailable for full-time work, with 43,000 being full-time students and 29,700 in the part-time labour force.

**Unemployment rates: Trend**

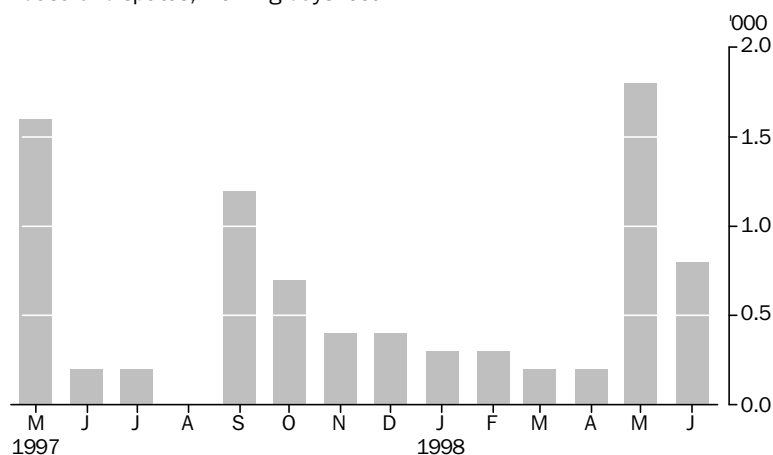


**Industrial disputes**

In June 1998 a total of 800 working days were lost through industrial disputation, a decrease of 55.6% from May 1998. South Australia, again, had a low level of industrial disputation, contributing 1.1% to the national level of 71,100 working days lost

The number of working days lost in South Australia in the 12 months to June 1998 was 6,500, 60.1% lower than the 16,300 days lost in the 12 months to June 1997.

Industrial disputes, working days lost



Overtime

In original terms, the proportion of employees who worked overtime in May 1998 was 12.8%, compared with 15.9% in May 1997.

In May 1998, employees who worked overtime in South Australia recorded an average of 5.6 overtime hours per week. This was lower than the 6.8 overtime hours recorded 12 months earlier.

INCOMES

Average weekly earnings

The trend estimate of average weekly ordinary time earnings of full-time adult employees fell 0.5% from February 1998 to May 1998. The full-time adult ordinary time earnings for males and females decreased 0.2% and 1.0% respectively.

Between May 1997 and May 1998, the trend estimate of average weekly ordinary time earnings of full-time adult male employees increased 3.3% whilst the female rate increased 7.8%.

For Australia, the trend estimate of full-time adult ordinary time earnings for males and females rose by 4.0% and 4.1% respectively in the 12 months to May 1998.

Note: Since it is an average of earnings across all employees, changes in average weekly earnings may occur through changes in employment as well as changes in pay levels.



**Wage cost index**

The Wage Cost Index measures quarterly changes in wage and salary costs for employee jobs. Hourly rates of pay are collected on both an ordinary time and total time basis, with or without bonuses. The first reference period is the quarter to December 1997. This new measure replaces the discontinued award rates of pay index.

In South Australia, the index of total hourly rates of pay (excluding bonuses) increased by 0.4% between March 1998 and June 1998. Nationally, the corresponding increase was also 0.4%.

In South Australia, the index of ordinary time hourly rates of pay (excluding bonuses) rose by 0.4% in the quarter to June 1998. The Australian rate increased 0.4% for the same period.

**FINANCIAL MARKETS****Housing finance**

The trend estimate for the value of new housing commitments (excluding alterations and additions) increased marginally for the fifth consecutive month, increasing in July 1998 to \$279.0m. Seasonally adjusted the value decreased 9.7% to \$269.0m to be 11.2% higher than July 1997. Nationally the trend remained flat with the seasonally adjusted value for July down 8.9%. South Australia's proportion of the national total fell to 5.5%.

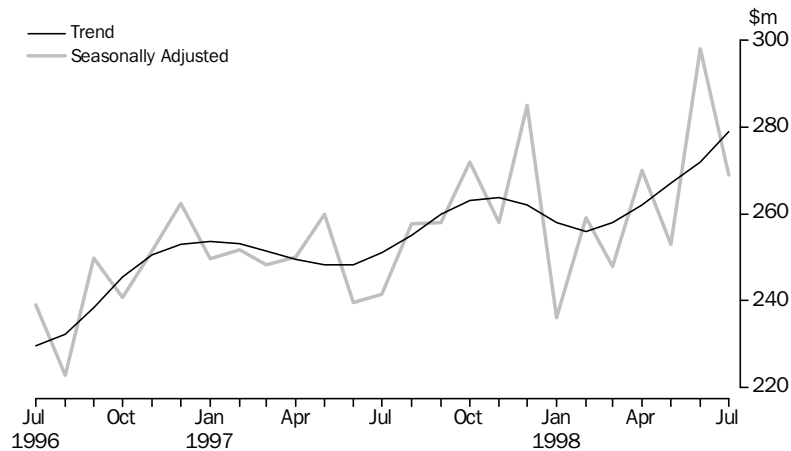
Total new commitments (original figures including alterations and additions) decreased 11.2% to \$286.0m, 12.5% above the previous July. Nationally the decrease in total new commitments in July was 4.4%, 6.9% higher than July 1997. The number of dwelling commitments in South Australia decreased 10.5% to 3,204, 6.7% above the previous July. The average value of commitments decreased marginally during the month to \$85,500.

All categories had significant decreases except for commitments for the purchase of newly erected houses. The main decrease was for the purchase of established dwellings, down 8.8% to \$166.0m. Construction of dwellings decreased 16.7% to \$40.0m. The other major decrease was for refinancing, down 11.8% to \$60.0m, 8.2% above July 1997.

Alterations and additions decreased 14.3% to \$12.0m, 11.2% above July 1997.

Commitments for the purchase of newly erected dwellings other than houses decreased \$2.0m to \$1.0m while the commitments for newly erected houses were up 16.7% to \$7.0m.

Secured housing finance commitments (a)



(a) Excludes alterations and additions. Includes refinancing.

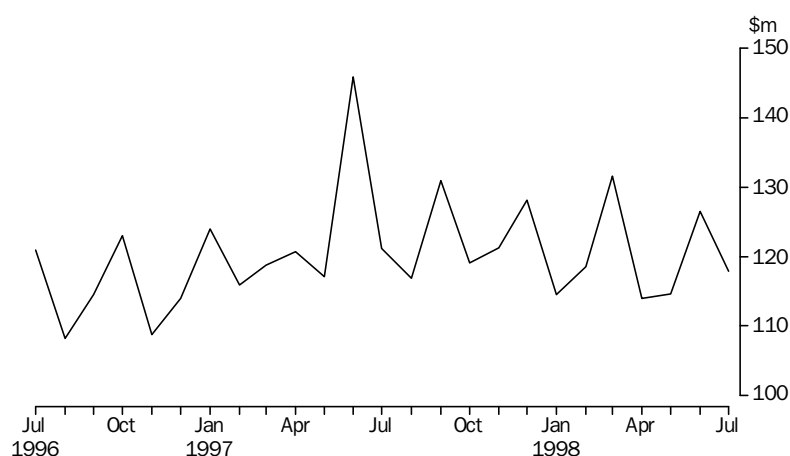
Personal finance

Total personal finance commitments decreased 5.0% to \$252.6m in July 1998, 9.2% below the previous July. Nationally the decrease for the month was 2.9%, 3.4% lower over the year. In seasonally adjusted terms the national commitments for personal finance were down 14.9% in July. South Australia's proportion of the national total was 6.7%.

Both fixed loan commitments and revolving credit facilities in South Australia were down. Fixed loan commitments dropped 6.7% to \$117.9m, marginally below the previous July. This was the lowest July since 1994. The biggest fall occurred for refinancing, down 15.5% to \$12.4m, 29.2% lower than July 1997. Debt consolidation was down 16.2% to \$8.0m, 42.0% lower than the previous July. Commitments for individual residential blocks of land decreased 26.0% to \$4.5m, 2.8% lower than the previous year. Both new and used motor cars and station wagons decreased marginally, with new still 20.7% higher than the previous July. The only category to increase was motor cycles etc. which rose \$1.4m to \$2.4m.

Revolving credit facilities fell 3.4% to \$134.7m to be 14.3% lower than July 1997. The decrease was due to the fall in secured revolving credit facilities, down 8.3% to \$81.5m, only partially offset by the increase in unsecured revolving facilities which rose 5.0% to \$53.2m. Both these categories were significantly lower than the previous July.

Personal fixed loan commitments, all lenders



Commercial finance

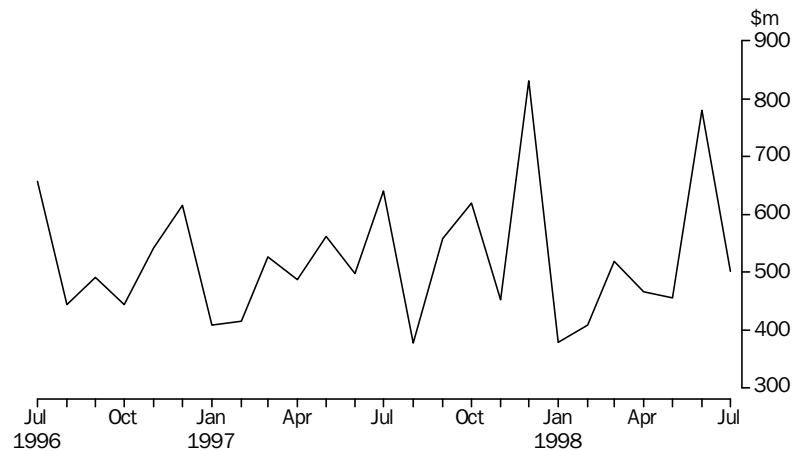
Total commercial finance commitments for July 1998 decreased 35.6% to \$501.5m from the June peak and was 21.7% lower than the previous July. The Australian total decreased marginally for the month, 1.8% higher than the previous July. Seasonally adjusted the Australian monthly change represented an increase of 7.5%. South Australia's proportion of the national total fell to 3.1%.

Revolving credit facilities decreased 45.7% to \$188.2m, 14.8% below the previous July. The main part of the decrease was for manufacturing, down 71.8% to \$44.4m, following the highest month since January 1996. Agriculture, forestry, fishing and hunting decreased 23.6% to \$43.6m, retail trade decreased 51.0% to \$12.1m, following a high month, and cultural, recreation, personal and other services decreased 62.3% to \$7.4m. The main increase was for finance, investment and insurance which rose 43.8% to \$28.1m, following a big increase in the previous month.

Commitments under fixed loan facilities decreased 27.6% to \$313.3m, 25.3% down on July 1997.

Health and community services fell 82.9% to \$7.1m, following the highest recorded month. Transport and storage decreased 62.8% to \$16.6m, manufacturing decreased 63.0% to \$9.9m and agriculture, forestry, fishing and hunting decreased 27.5% to \$43.7m. The main increase was cultural, recreational, personal and other services, up 34.0% to \$17.8m.

Commercial finance commitments, all lenders



Lease finance

New finance lease commitments in July 1998 decreased 13.7% to \$32.4m from the June peak which was the highest month since 1992. The past three months have all been significantly higher than the corresponding months of 1997. The Australian total decreased 22.9% in original terms, representing a decrease of 0.3% when seasonally adjusted. South Australia's proportion of Australian commitments was 3.6%.

The main fall in South Australia was for construction and earth moving equipment, down 86.9% to \$0.4m following the highest month since September 1996. Lease commitments for new heavy trucks were down 54.6% to \$1.5m, marginally higher than the previous July.

Two of the main increases occurred for new and used cars not subject to depreciation with new rising by 20.9% to \$8.3m, 24.6% above the previous July and used rising 33.5% to \$4.3m, 9.1% up over the year.

FORWARD OUTLOOK

Composite leading indicator for Australia

The Composite Leading Indicator (CLI) is a single time series produced by aggregating eight individual economic indicators, and has been developed by the ABS as an experimental series to supplement existing forms of economic analysis and modelling.

The CLI summarises the early signals contained in a selection of economic indicators and is designed to assist the detection of turning points between successive expansions and slow downs of economic activity as measured by constant price GDP(A). It does not attempt to forecast the level of economic activity.

Composite leading indicator for Australia

In the June quarter 1998 :

- the experimental CLI fell 0.26%, following a fall of 0.14% in the March quarter 1998. This third consecutive fall gives a provisional peak in the CLI in the September quarter 1997.

The quarterly data are released in more detail in the *Australian Economic Indicators* (Cat. no. 1350.0). The CLI was the topic of the Focus article in the September 1993 edition of *South Australian Economic Indicators* (Cat. no. 1307.4). A review of the performance of the CLI and its components was published in the July 1997 issue of Cat. no. 1350.0.

Business expectations

Surveys of business expectations have been available to decision makers for a number of years from several sources. These surveys provided *qualitative* indicators in the form of the net proportion of businesses expecting a rise or fall in future business conditions. Since the December quarter 1993, the ABS has been compiling a *quantitative* indicator of business expectations in the form of an expected weighted aggregate change in a range of economic variables. These data are available on a quarterly basis in *Australian Business Expectations* (Cat. no. 5250.0).

South Australia, Short-term outlook expected aggregate change

.....

EXPECTED AGGREGATE CHANGE  
OVER THE PREVIOUS QUARTER.....

	Sep qtr 1997	Dec qtr 1997	Mar qtr 1998	Jun qtr 1998	Sep qtr 1998
<i>Business performance indicators</i>	%	%	%	%	%
<b>Trading performance</b>					
Operating income	0.0	5.1	0.2	1.9	2.0
Selling prices	0.3	0.3	0.2	0.5	0.4
Profit	-3.9	26.5	3.0	2.9	12.4
<b>Investment</b>					
Capital expenditure	5.4	9.5	1.5	9.8	2.6
Stocks	-0.4	0.6	1.9	0.2	-2.4
<b>Employment</b>					
Full time equivalent	-0.4	1.0	0.1	-0.1	-1.2

*Short term*—South Australian businesses expect an increase of 2.0% in operating income in the September quarter 1998 compared with the June quarter 1998 whilst the Australian rate was 1.1%. The investment component for South Australia was expected to be 2.6% increase in capital expenditure compared with 3.8% for Australia whilst full-time employment levels were expected to fall 1.2% for South Australia and 0.7% for Australia.

South Australia, Medium-term outlook expected aggregate change

EXPECTED AGGREGATE CHANGE OVER THE  
SAME QUARTER OF THE PREVIOUS YEAR.....

	<i>Jun qtr</i> 1998	<i>Sep qtr</i> 1998	<i>Dec qtr</i> 1998	<i>Mar qtr</i> 1999	<i>Jun qtr</i> 1999
<i>Business performance indicators</i>	%	%	%	%	%
<b>Trading performance</b>					
Operating income	3.4	4.8	4.3	2.7	3.4
Selling prices	0.9	0.8	0.8	0.7	0.8
Profit	11.2	25.3	18.1	22.7	20.9
<b>Investment</b>					
Capital expenditure	-0.8	3.0	2.3	-2.0	8.6
Stocks	0.3	1.1	2.0	0.2	0.3
<b>Employment</b>					
Full time equivalent	0.0	-0.3	-1.5	-1.3	-0.5

*Medium term*—Businesses in South Australia expect operating income in the June quarter 1999 to be 3.4% above June quarter 1998. Capital expenditure was expected to increase by 8.6% whilst employment indicators are showing negative change of 0.5%. The Australian data shows a 3.2% increase in capital expenditure and a 0.5% fall in employment levels.

## LIST OF TABLES

			Page
TABLES			
1	Statistical summary		24
	Time series		
2	State accounts—current prices		26
3	State accounts—average 1989–90 prices		27
4	Merchandise exports by selected commodity group		28
5	Merchandise exports by selected countries		29
6	Merchandise exports by industry of origin		30
7	Merchandise imports by selected commodity group		31
8	Turnover of retail establishments by industry		32
9	New motor vehicle registrations by type of vehicle		33
10	Actual private new capital expenditure by selected industry and type of asset		34
11	Tourist accommodation		35
12	Building approvals		36
13	Building commencements		37
14	Value of building work done during period		38
15	Production, livestock products and selected commodities		39
16	Consumer price index, by group—Adelaide		40
17	Average retail prices of selected consumer items—Adelaide		41
18	Estimated resident population and components of population change		42
19	Civilian labour force status		43
20	Civilian labour force, unemployment and participation rates		44
21	Average weekly earnings of employees		45
22	Finance commitments		46

Indicator	SOUTH AUSTRALIA.....					AUSTRALIA.....				
	Unit	Period	Number	% change from.....		Number	% change from.....		SA as a % of Aust.	Source index
				Previous period	Same period previous year		Previous period	Same period previous year		
<b>State accounts</b>										
Domestic final demand										
Current prices trend	\$m	Jun qtr 98	9 778	1.1	5.0	138 562	1.0	5.7	7.1	(1)
1989-90 prices trend	\$m	Jun qtr 98	8 332	0.6	3.7	119 212	0.4	4.0	7.0	(1)
Private final consumption expenditure										
Current prices trend	\$m	Jun qtr 98	6 318	1.7	6.6	85 903	1.2	5.8	7.4	(1)
1989-90 prices trend	\$m	Jun qtr 98	5 323	1.4	6.1	71 619	0.8	4.6	7.4	(1)
Private gross fixed capital expenditure										
Current prices trend	\$m	Jun qtr 98	1 489	-0.5	9.3	24 579	0.5	9.6	6.1	(1)
1989-90 prices trend	\$m	Jun qtr 98	1 370	-1.4	5.7	24 158	0.0	7.3	5.7	(1)
Wages, salaries and supplements										
Current prices trend	\$m	Jun qtr 98	4 752	-0.2	2.3	69 517	1.2	5.7	6.8	(1)
<b>International accounts</b>										
Exports	\$m	Jul 98	385.3	-6.9	-5.5	7 119.0	-2.2	4.5	5.4	(2)
Imports	\$m	Jul 98	331.9	5.3	-11.8	8 950.9	5.7	20.7	3.7	(2)
<b>Consumption and investment</b>										
Retail turnover										
Current prices original	\$m	Jul 98	865.8	6.2	7.6	11 468.6	7.0	5.6	7.5	(3)
Current prices trend	\$m	Jul 98	877.5	0.4	8.6	11 504.3	0.5	4.5	7.6	(3)
1989-90 prices original	\$m	Jun qtr 98	2 067.4	4.1	8.3	26 971.4	2.6	2.9	7.7	(3)
New motor vehicle registrations										
Original	no.	Jul 98	5 087	-11.7	30.6	73 959	-16.0	19.1	6.9	(4)
Trend	no.	Jul 98	4 931	3.6	28.1	71 657	2.5	20.5	6.9	(4)
Private new capital expenditure										
Current prices original	\$m	Jun qtr 98	792	9.8	9.5	12 305	19.5	3.5	6.4	(6)
Current prices trend	\$m	Jun qtr 98	792	-2.3	13.5	11 687	0.2	4.8	6.8	(6)
Private new capital expenditure	\$m	1997-98	3 183	..	23.4	45 974	..	4.9	6.9	(6)
Takings, licensed hotels, motels, guesthouses and apartments with facilities	\$m	Mar qtr 98	44.0	n.a.	8.7	955.5	n.a.	2.7	4.6	(5)
<b>Production</b>										
Dwelling unit approvals										
Original	no.	Jul 98	921	13.7	45.3	14 414	-1.6	13.0	6.4	(7)
Trend	no.	Jul 98	737	4.5	29.5	13 786	0.2	15.4	5.3	(7)
Dwelling units commenced	no.	Jun qtr 98	1 570	-5.0	-7.2	38 094	8.3	11.0	4.1	(8a)
Value of non-residential building approvals	\$m	Jun 98	36.5	-4.5	-60.3	1 214.7	-17.8	14.7	3.0	(7)
Value of total building activity										
Commenced	\$m	Mar qtr 98	281.3	-27.4	10.9	7 428.1	-13.4	6.0	3.8	(8)
Work done	\$m	Mar qtr 98	327.2	-16.3	13.1	7 475.3	-9.8	9.7	4.4	(8)
Work yet to be done	\$m	Mar qtr 98	300.3	-10.3	-7.0	12 588.7	2.6	22.3	2.4	(8)
Value of engineering construction work done	\$m	Mar qtr 98	302.8	1.2	51.2	4 386.5	5.3	30.3	6.9	(9)
Manufacturing production										
Red meat	tonnes	Jun 98	13 720	-9.6	-14.4	241 750	-0.9	5.7	5.7	(11)
Mineral exploration expenditure (other than for petroleum)	\$m	Jun qtr 98	12.0	30.4	-17.2	262.6	19.1	-24.4	4.6	(12)



## SOUTH AUSTRALIA.....

## AUSTRALIA.....

Indicator	Unit	Period	Number	% change from.....		Number	% change from .....		SA as a % of Aust.	Source index
				Previous period	Same period previous year		Previous period	Same period previous year		
<b>Prices</b>										
CPI – All groups	1989–90=100	Jun qtr 98	122.4	0.6	0.4	121.0	0.6	0.7	..	(13)
Price index of materials used in house building	1989–90=100	Jun qtr 98	124.1	0.3	2.1	119.0	0.3	1.7	..	(14)
Price index of materials used in building other than houses	1989–90=100	Jun qtr 98	115.6	0.5	0.8	114.5	0.4	0.5	..	(15)
Price index of established houses	1989–90=100	Jun qtr 98	113.7	-0.3	4.3	126.9	2.2	8.6	..	(16)
Price index of project homes	1989–90=100	Jun qtr 98	114.4	0.6	7.0	110.8	0.4	1.5	..	(16)
<b>Labour force and demography</b>										
Population (resident at end qtr)	'000	Dec qtr 97	1 482.9	0.1	0.5	18 631.1	0.2	1.1	8.0	(17)
Short-term overseas visitor arrivals	no.	Jun 98	3 647	-26.1	-14.6	304 194	7.3	-1.3	1.2	(21)
Short-term resident departures	no.	Jun 98	13 367	-4.8	10.9	282 271	3.5	0.8	4.7	(21)
<b>Labour force</b>										
Original	'000	Aug 98	715.1	0.8	-1.6	9 263.9	-1.1	2.0	7.7	(18)
Trend	'000	Aug 98	713.4	0.1	-2.8	9 376.4	0.1	1.8	7.6	(18)
<b>Employed persons</b>										
Original	'000	Aug 98	643.0	0.5	-3.1	8 535.9	-1.2	2.7	7.5	(18)
Trend	'000	Aug 98	640.0	0.0	-3.4	8 608.2	0.1	2.2	7.4	(18)
<b>Participation rate</b>										
Original(a)	%	Aug 98	59.9	0.4	-1.4	62.6	-0.8	0.4	..	(18)
Trend(a)	%	Aug 98	59.8	0.0	-2.1	63.4	0.0	0.3	..	(18)
<b>Unemployment rate</b>										
Original(a)	%	Aug 98	10.1	0.3	0.8	7.9	0.1	-0.5	..	(18)
Trend(a)	%	Aug 98	10.3	0.1	0.6	8.2	0.0	-0.4	..	(18)
Job vacancies	'000	May 98	2.7	-18.2	-10.0	73.3	-2.9	26.2	3.7	(19)
Average weekly overtime per employee working overtime	hours '000 working	May 98	5.6	3.4	-18.4	6.7	-0.1	-4.7	..	(19)
Industrial disputes	days lost	Jun 98	0.8	-55.6	300.0	71.1	-26.3	139.4	1.1	(20)
<b>Incomes</b>										
<b>Average weekly earnings (full-time adults; ordinary time)</b>										
Original	\$	May 98	680.10	-0.5	3.7	726.9	0.6	4.3	..	(22)
Trend	\$	May 98	682.10	1.2	4.2	725.9	0.8	3.9	..	(22)
<b>Wage cost index (Total hourly rate excluding bonuses)</b>										
	Sep 1997=100	Jun 98	101.9	0.4	..	102.1	0.4	n.y.a.	..	(23)
<b>Financial markets</b>										
Secured housing finance	\$m	Jul 98	286.0	-11.2	12.5	5 168.0	-4.4	6.9	5.5	(24)
<b>Finance commitments</b>										
Personal	\$m	Jul 98	252.6	-5.0	-9.2	3 756.8	-2.9	-3.4	6.7	(25)
Commercial	\$m	Jul 98	501.5	-35.6	-21.7	1 626.1	-0.7	1.8	30.8	(25)
Lease	\$m	Jul 98	32.4	-13.7	8.4	896.7	-22.9	4.5	3.6	(25)
<b>Interest rates</b>										
Banks new housing loans(a)	%	Aug 98	..	..	..	6.70	0.0	0.00	..	(26)
<b>Banks business loans(a)</b>										
Small, medium sized business	%	Aug 98	..	..	..	7.70	0.0	-1.55	..	(26)
Large business	%	Aug 98	..	..	..	8.05	0.0	-0.40	..	(26)

(a) Change is shown in terms of percentage points.

Period	FINAL CONSUMPTION EXPENDITURE....		GROSS FIXED CAPITAL EXPENDITURE....		State final demand	Gross State product (I)	Wages, salaries and supplements
	Private	Government	Private	Government			
ANNUAL (\$m)							
1992-93	19 493	5 969	3 980	1 372	30 814	29 989	15 131
1993-94	20 596	6 628	4 019	1 182	32 426	32 057	16 370
1994-95	21 760	6 698	4 051	1 254	34 763	33 437	16 698
1995-96	23 008	6 748	4 765	1 014	35 535	35 457	17 599
1996-97	23 370	6 830	5 201	1 147	36 548	36 023	18 189
1997-98	24 648	6 898	5 927	1 046	38 519	n.a.	19 015
PERCENTAGE CHANGE FROM PREVIOUS YEAR							
1992-93	2.8	2.7	-1.0	-4.0	2.0	4.4	2.8
1993-94	3.8	5.4	-1.1	-13.5	2.6	3.3	8.2
1994-95	5.7	1.1	0.8	6.1	7.2	4.3	2.0
1995-96	5.7	0.7	17.6	-19.1	2.2	6.0	5.4
1996-97	1.6	1.2	9.2	13.1	2.9	1.6	3.4
1997-98	5.5	1.0	14.0	-8.8	5.4	n.a.	4.5
QUARTERLY, ORIGINAL (\$m)							
<b>1996-97</b>							
March	5 608	1 563	1 117	324	8 612	8 634	4 451
June	5 854	1 915	1 438	318	9 525	9 006	4 599
<b>1997-98</b>							
September	5 999	1 686	1 395	220	9 299	n.a.	4 743
December	6 440	1 726	1 680	326	10 172	n.a.	4 950
March	5 982	1 570	1 396	143	9 091	n.a.	4 516
June	6 227	1 916	1 457	357	9 957	n.a.	4 806
QUARTERLY, TREND (\$m)							
<b>1996-97</b>							
March	5 855	1 711	1 301	286	9 154	9 049	4 577
June	5 925	1 727	1 370	287	9 308	9 116	4 646
<b>1997-98</b>							
September	6 013	1 721	1 453	285	9 472	n.a.	4 717
December	6 112	1 710	1 493	269	9 584	n.a.	4 755
March	6 215	1 716	1 497	245	9 673	n.a.	4 762
June	6 318	1 746	1 489	224	9 778	n.a.	4 752
PERCENTAGE CHANGE FROM PREVIOUS QUARTER, TREND							
<b>1996-97</b>							
March	0.5	1.7	3.3	-5.3	0.9	0.8	0.8
June	1.2	0.9	5.3	0.3	1.7	0.7	1.5
<b>1997-98</b>							
September	1.5	-0.3	6.1	-0.7	1.8	..	1.5
December	1.6	-0.6	2.8	-5.6	1.2	..	0.8
March	1.7	0.4	0.3	-8.9	0.9	..	0.1
June	1.7	1.7	-0.5	-8.6	1.1	..	-0.2

Period	FINAL CONSUMPTION EXPENDITURE....		GROSS FIXED CAPITAL EXPENDITURE....		State final demand	Gross State product (I)
	Private	Government	Private	Government		
ANNUAL (\$m)						
1992-93	17 491	5 358	3 696	1 292	27 837	28 077
1993-94	18 154	5 646	3 655	1 118	28 572	29 004
1994-95	18 992	5 760	4 584	1 179	30 515	29 226
1995-96	19 740	5 711	4 308	952	30 711	30 465
1996-97	19 845	5 705	5 025	1 065	31 640	30 868
1997-98	20 830	5 701	5 556	945	33 032	n.a.
PERCENTAGE CHANGE FROM PREVIOUS YEAR						
1992-93	0.3	0.6	-4.0	-5.3	-0.5	3.9
1993-94	3.8	5.4	-1.1	-13.5	2.6	3.3
1994-95	4.6	2.0	25.4	5.5	6.8	0.8
1995-96	3.9	-0.9	-6.0	-19.3	0.6	4.2
1996-97	0.5	-0.1	16.6	11.9	3.0	1.3
1997-98	5.0	-0.1	10.6	-11.3	4.4	..
QUARTERLY, ORIGINAL (\$m)						
<b>1996-97</b>						
March	4 743	1 312	1 070	298	7 423	7 280
June	4 963	1 594	1 367	298	8 222	7 524
<b>1997-98</b>						
September	5 072	1 385	1 350	189	7 996	n.a.
December	5 454	1 440	1 584	297	8 776	n.a.
March	5 056	1 286	1 280	132	7 754	n.a.
June	5 248	1 590	1 342	326	8 507	n.a.
QUARTERLY, TREND (\$m)						
<b>1996-97</b>						
March	4 959	1 430	1 257	265	7 911	7 701
June	5 015	1 439	1 315	262	8 032	7 662
<b>1997-98</b>						
September	5 091	1 431	1 386	257	8 165	n.a.
December	5 171	1 417	1 406	243	8 237	n.a.
March	5 250	1 416	1 390	223	8 279	n.a.
June	5 323	1 433	1 370	206	8 332	n.a.
PERCENTAGE CHANGE FROM PREVIOUS QUARTER, TREND						
<b>1996-97</b>						
March	0.2	1.6	2.8	-5.7	0.7	-0.2
June	1.1	0.6	4.6	-1.1	1.5	-0.5
<b>1997-98</b>						
September	1.5	-0.6	5.4	-1.9	1.7	..
December	1.6	-1.0	1.4	-5.4	0.9	..
March	1.5	-0.1	-1.1	-8.2	0.5	..
June	1.4	1.2	-1.4	-7.6	0.6	..

# 4

## MERCHANDISE EXPORTS, By Selected Commodity Group(a)

Period	Meat and meat preparations	Cereals and cereal preparations	Wine	Wool and sheepskins	Machinery	Metals and metal manu- factures	Fish and crustaceans	Road vehicles, parts and accessories	Petroleum and petroleum products	Total
	\$'000	\$'000	\$'000	\$'000	\$'000	\$'000	\$'000	\$'000	\$'000	\$'000
ANNUAL										
1992-93	282 181	573 375	192 255	318 989	211 426	490 594	154 608	338 359	372 445	3 760 602
1993-94	324 796	436 517	238 366	290 963	223 760	462 355	186 861	351 229	276 473	3 889 783
1994-95	307 785	261 052	250 527	301 645	285 309	571 094	191 386	332 321	285 310	3 829 336
1995-96	244 508	713 092	318 534	240 148	340 205	610 899	196 629	249 237	220 915	4 498 532
1996-97	182 478	745 227	397 949	260 974	378 923	542 204	191 093	655 916	286 458	5 012 652
1997-98	218 161	527 689	563 970	287 113	401 749	574 168	236 316	479 453	237 824	4 986 196
MONTHLY										
<b>1996-97</b>										
May	16 003	16 145	36 804	26 233	35 384	55 444	15 449	39 717	15 488	367 824
June	15 421	18 987	30 160	23 847	29 641	47 560	11 051	57 105	36 706	406 373
<b>1997-98</b>										
July	12 693	18 848	38 625	31 249	41 558	47 372	16 678	53 516	14 509	407 524
August	11 641	18 715	44 669	17 560	31 082	43 635	18 826	60 483	39 320	419 433
September	15 556	27 715	62 570	24 139	38 751	50 905	18 769	18 938	26 927	383 286
October	17 450	10 488	62 258	23 438	26 461	37 876	23 608	39 356	10 935	360 806
November	21 311	8 737	33 344	29 856	41 032	61 843	18 039	83 677	18 110	454 765
December	22 742	67 159	36 065	35 568	38 306	40 932	13 637	72 253	33 679	482 274
January	15 469	92 923	25 835	20 260	21 783	56 613	24 571	15 137	12 427	373 005
February	21 174	45 383	43 674	17 710	27 617	41 114	18 253	19 097	18 197	363 816
March	23 937	62 521	55 440	26 154	37 500	51 672	22 850	37 642	19 792	474 807
April	20 257	71 491	50 539	16 054	30 937	47 991	21 581	24 260	12 089	410 037
May	19 742	36 499	58 198	28 707	41 200	44 439	18 447	30 825	18 406	442 465
June	16 188	67 210	52 754	16 418	25 411	49 776	21 046	24 268	13 434	414 023
<b>1998-99</b>										
July	11 876	40 782	48 011	17 517	36 600	36 638	23 552	44 116	8 909	385 321

(a) Final stage of production in South Australia.

## 5

## MERCHANDISE EXPORTS, By Selected Countries(a)

Period	EUROPEAN COMMUNITY.....				EAST ASIA.....					
	United States of America	Middle East	United Kingdom	Total European Community	New Zealand	Japan	China	Hong Kong	ASEAN	Total East Asia
	\$'000	\$'000	\$'000	\$'000	\$'000	\$'000	\$'000	\$'000	\$'000	\$'000
ANNUAL										
1992-93	352 764	314 049	237 520	594 701	288 421	649 684	208 135	171 803	487 174	1 820 065
1993-94	393 611	280 499	263 092	571 047	311 999	625 481	220 211	165 163	533 977	1 898 975
1994-95	329 878	184 342	246 118	553 051	376 262	682 937	177 875	193 014	551 433	2 004 013
1995-96	279 555	525 348	287 727	691 996	376 628	672 885	293 360	202 307	572 529	2 057 945
1996-97	707 871	563 409	304 645	641 308	382 103	611 870	244 917	234 547	614 481	2 030 435
1997-98	631 845	399 122	424 076	849 414	354 724	611 915	331 335	239 602	490 044	2 023 102
MONTHLY										
<b>1996-97</b>										
May	49 537	30 815	26 602	63 284	21 142	47 286	17 553	16 373	50 567	166 869
June	83 248	19 843	21 783	60 136	21 859	56 675	15 479	17 994	59 211	180 155
<b>1997-98</b>										
July	75 629	33 014	27 348	60 442	25 538	47 644	31 626	15 779	55 728	178 994
August	80 052	22 224	43 757	72 636	22 840	51 224	21 497	16 567	56 417	175 291
September	25 569	14 786	43 947	79 167	31 032	64 737	22 139	22 409	53 528	182 763
October	26 279	10 465	55 190	89 953	41 159	52 538	27 453	10 146	41 821	149 685
November	92 792	20 278	26 755	56 937	25 983	65 589	33 375	28 165	65 238	224 741
December	80 392	41 986	27 798	59 759	17 406	54 762	33 218	25 272	50 982	196 158
January	19 822	50 590	16 660	37 176	23 869	39 153	24 536	27 258	34 097	155 151
February	33 828	32 808	28 220	69 544	29 889	36 608	36 830	23 072	19 943	137 416
March	63 876	57 910	33 359	78 026	37 792	48 437	37 418	21 220	39 530	180 749
April	38 225	52 361	39 893	78 611	35 943	45 057	12 599	14 654	20 871	127 019
May	43 367	29 817	46 313	99 558	32 101	51 080	28 728	20 116	24 954	160 207
June	52 014	32 884	34 838	67 607	31 172	55 086	21 916	14 943	26 916	153 993
<b>1998-99</b>										
July	49 659	36 661	37 601	66 030	36 001	44 900	11 007	19 743	25 408	123 799

(a) Final stage of production in South Australia.

## 6

## MERCHANDISE EXPORTS, By Industry of Origin(a)

## MANUFACTURING.....

Period	Agriculture, forestry and fishing	Mining	Food, beverages and tobacco	Petroleum, coal, chemical associated product	Metal product	Machinery and equipment	Other manu- facturing	Other industries/ confidential	Total
	\$'000	\$'000	\$'000	\$'000	\$'000	\$'000	\$'000	\$'000	\$'000
ANNUAL									
1992-93	883 725	294 586	766 518	195 387	509 303	641 930	178 726	290 427	3 760 602
1993-94	733 014	245 247	884 737	180 147	475 060	665 066	208 573	497 938	3 889 783
1994-95	592 129	268 537	886 337	186 661	584 838	711 529	243 314	355 991	3 829 336
1995-96	1 014 521	226 309	978 332	172 285	639 267	674 131	226 496	567 191	4 498 532
1996-97	1 067 084	205 433	981 918	290 361	569 715	1 140 136	229 503	528 502	5 012 652
1997-98	955 877	137 851	1 204 825	292 175	615 110	994 423	262 425	523 511	4 986 196
MONTHLY									
<b>1996-97</b>									
May	42 278	991	85 038	27 163	59 593	85 068	20 725	46 969	367 824
June	54 021	32 623	75 807	27 816	51 123	92 591	17 531	54 860	406 373
<b>1997-98</b>									
July	79 999	20 940	83 465	14 706	48 601	105 329	24 710	29 775	407 524
August	51 751	11 810	93 510	37 889	48 749	99 482	24 132	52 109	419 433
September	55 954	22 149	115 717	24 155	55 582	65 692	21 983	22 055	383 286
October	43 747	1 722	119 482	18 055	39 144	73 873	19 015	45 776	360 815
November	45 830	16 715	89 418	25 488	67 645	134 105	22 038	53 454	454 693
December	101 555	28 936	88 087	26 808	45 353	121 927	21 840	47 765	482 272
January	121 012	6 767	77 125	17 938	58 344	43 235	18 390	30 195	373 005
February	77 088	805	91 546	25 843	42 630	56 040	19 497	50 367	363 816
March	110 422	13 279	116 812	23 588	55 728	86 302	29 952	38 724	474 807
April	94 690	896	105 740	22 179	51 670	64 034	20 362	50 466	410 037
May	72 381	3 524	118 919	30 653	49 562	84 645	23 821	58 959	442 465
June	101 429	10 307	105 003	24 871	52 102	59 758	16 759	43 794	414 023
<b>1998-99</b>									
July	80 064	916	94 641	16 905	42 670	91 947	16 950	41 227	385 321

(a) Final stage of production in South Australia.

# 7

## MERCHANDISE IMPORTS, By Selected Commodity Group(a)

<i>Period</i>	<i>Food, beverages and tobacco</i>	<i>Petroleum and petroleum products</i>	<i>Chemicals</i>	<i>Textiles</i>	<i>Metals and metal manufactures</i>	<i>Machinery</i>	<i>Road, vehicles, parts and accessories</i>	<i>Other manufactured goods</i>	<i>Total</i>
	\$'000	\$'000	\$'000	\$'000	\$'000	\$'000	\$'000	\$'000	\$'000
<b>ANNUAL</b>									
1992-93	91 756	570 334	186 001	57 434	255 924	609 212	661 714	521 723	3 068 122
1993-94	99 177	404 626	200 225	60 172	160 937	595 238	663 617	484 590	2 803 446
1994-95	115 930	330 430	220 536	64 524	214 432	695 038	749 658	563 368	3 099 510
1995-96	118 237	346 397	254 102	76 847	213 487	675 869	546 445	728 096	3 114 309
1996-97	136 695	505 633	225 187	79 708	223 259	868 346	538 690	695 238	3 413 043
1997-98	148 753	445 218	276 222	94 956	280 565	1 062 183	772 591	739 364	3 943 093
<b>MONTHLY</b>									
<b>1996-97</b>									
May	11 588	45 354	19 293	6 467	15 123	54 510	35 983	48 198	246 008
June	9 424	39 315	20 252	7 109	20 569	66 474	54 586	48 670	283 146
<b>1997-98</b>									
July	10 522.0	66 543	14 283	6 781	22 112	107 428	83 398	56 474	376 173
August	12 208	29 929	13 882	6 401	24 929	75 139	81 995	53 136	305 788
September	13 380	61 141	13 489	7 031	21 941	79 644	58 896	80 302	343 992
October	15 074	2 052	12 983	8 211	22 588	76 605	67 992	56 732	271 659
November	14 009	67 061	16 244	7 528	21 290	75 564	55 373	51 324	321 543
December	13 857	32 306	22 823	6 607	21 520	115 623	58 610	58 122	342 164
January	13 497	29 721	39 180	8 063	24 670	96 949	54 033	55 479	332 475
February	10 608	39 221	26 096	8 195	27 664	69 791	53 601	70 676	314 319
March	11 294	41 325	31 280	8 679	26 177	86 622	70 446	70 618	357 003
April	10 012	22 090	38 577	9 335	21 137	113 439	61 182	63 091	350 598
May	11 211	38 780	28 488	10 046	21 402	74 465	56 391	60 749	312 077
June	13 082	15 049	18 898	8 080	25 135	90 914	70 675	62 649	315 302
<b>1998-99</b>									
July	14 342	23 350	12 984	9 536	26 554	97 567	71 769	64 645	331 942

(a) Goods released from Customs control in South Australia.

## 8

## TURNOVER OF RETAIL ESTABLISHMENTS, By Industry

Period	Food retailing	Department stores	Clothing and soft good retailing	Household good retailing	Recreational good retailing	Other retailing	Hospitality and services	Total
ANNUAL (\$m)								
1993-94	3 253.3	1 107.8	479.0	917.8	378.1	684.0	1 338.8	8 158.8
1994-95	3 477.3	1 128.8	538.0	959.6	383.8	793.5	1 654.4	8 935.4
1995-96	3 786.4	1 138.6	546.6	1 025.8	431.2	902.7	1 762.1	9 593.4
1996-97	4 064.9	1 120.9	467.1	936.9	424.8	792.8	1 648.0	9 455.7
1997-98	4 454.4	1 073.7	541.0	1 084.2	413.3	928.2	1 502.7	10 051.4
MONTHLY, ORIGINAL (\$m)								
<b>1996-97</b>								
May	344.6	96.2	45.3	77.2	32.0	71.3	132.4	798.9
June	320.2	80.0	40.7	74.9	29.6	63.9	132.5	741.8
<b>1997-98</b>								
July	355.0	97.9	45.8	83.1	31.6	67.5	123.7	804.6
August	349.6	80.5	38.7	83.5	32.0	66.0	127.4	777.6
September	348.9	84.8	38.8	84.5	33.2	65.8	121.1	777.2
October	370.4	92.0	46.3	94.3	34.6	76.1	126.6	840.2
November	365.4	105.6	45.6	95.5	36.6	79.2	129.0	856.9
December	418.2	106.5	58.3	121.3	52.5	107.7	148.4	1 066.8
January	396.1	93.8	45.3	94.2	33.4	77.0	116.1	856.0
February	344.9	76.0	33.0	81.9	29.1	69.3	107.4	741.5
March	373.6	78.4	42.9	85.2	34.2	75.8	120.4	810.5
April	385.7	91.6	49.7	81.6	31.8	80.9	127.3	848.6
May	381.2	86.6	50.0	89.3	31.7	86.1	131.0	855.8
June	365.4	80.0	46.6	89.8	32.5	76.8	124.3	815.5
<b>1998-99</b>								
July	390.1	96.3	48.9	84.2	34.6	77.9	133.9	865.8
MONTHLY, TREND (\$m)								
<b>1996-97</b>								
May	346.1	93.4	41.5	77.5	33.7	67.7	137.0	797.4
June	348.4	94.1	42.5	78.5	34.0	67.8	135.9	802.7
<b>1997-98</b>								
July	351.2	94.7	43.4	84.4	34.3	68.0	134.0	807.8
August	354.3	94.6	43.9	86.0	34.4	68.9	131.0	811.9
September	357.4	94.0	44.1	88.1	34.2	70.9	127.1	815.9
October	360.6	93.3	44.1	90.2	34.0	73.4	122.9	820.1
November	364.2	92.9	44.1	92.0	33.7	76.2	119.5	825.6
December	368.5	93.2	44.1	93.0	33.4	78.7	117.7	832.7
January	373.5	93.5	44.4	93.2	33.4	80.7	117.9	840.7
February	378.3	93.7	45.0	92.7	33.6	81.8	120.0	848.7
March	382.2	93.5	45.8	91.9	34.1	82.2	123.8	855.7
April	385.1	93.3	46.6	90.9	34.7	82.4	128.2	862.1
May	387.5	93.1	47.3	90.0	35.3	82.4	132.6	868.2
June	389.6	93.4	47.8	89.2	35.9	82.3	136.4	874.4
<b>1998-99</b>								
July	390.4	93.3	48.0	88.3	36.2	82.0	139.6	877.5
PERCENTAGE CHANGE FROM PREVIOUS MONTH, TREND								
<b>1996-97</b>								
May	0.5	0.3	2.2	1.2	0.9	0.4	-0.6	0.5
June	0.7	0.7	2.4	1.3	0.9	0.1	-0.8	0.7
<b>1997-98</b>								
July	0.8	0.6	2.1	7.5	0.9	0.3	-1.4	0.6
August	0.9	-0.1	1.2	1.9	0.3	1.3	-2.2	0.5
September	0.9	-0.6	0.5	2.4	-0.6	2.9	-3.0	0.5
October	0.9	-0.7	0.0	2.4	-0.6	3.5	-3.3	0.5
November	1.0	-0.4	0.0	2.0	-0.9	3.8	-2.8	0.7
December	1.2	0.3	0.0	1.1	-0.9	3.3	-1.5	0.9
January	1.4	0.3	0.7	0.2	0.0	2.5	0.2	1.0
February	1.3	0.2	1.4	-0.5	0.6	1.4	1.8	1.0
March	1.0	-0.2	1.8	-0.9	1.5	0.5	3.2	0.8
April	0.8	-0.2	1.7	-1.1	1.8	0.2	3.6	0.7
May	0.6	-0.2	1.5	-1.0	1.7	0.0	3.4	0.7
June	0.5	0.3	1.1	-0.9	1.7	-0.1	2.9	0.7
<b>1998-99</b>								
July	0.2	-0.1	0.4	-1.0	0.8	-0.4	2.3	0.4



Period	ORIGINAL.....			SEASONALLY ADJUSTED.....			TREND ESTIMATE.....		
	Passenger vehicles	Other vehicles	Total	Passenger vehicles	Other vehicles	Total	Passenger vehicles	Other vehicles	Total
ANNUAL									
1991-92	32 351	5 333	37 684	..	..	..	..	..	..
1992-93	32 894	5 577	38 471	..	..	..	..	..	..
1993-94	32 806	5 781	38 587	..	..	..	..	..	..
1994-95	35 830	6 736	42 566	..	..	..	..	..	..
1995-96	36 067	6 828	42 895	..	..	..	..	..	..
1996-97	36 146	6 970	43 116	..	..	..	..	..	..
1997-98	43 407	7 453	50 860	..	..	..	..	..	..
PERCENTAGE CHANGE FROM PREVIOUS YEAR									
1991-92	-6.9	-19.4	-8.9	..	..	..	..	..	..
1992-93	1.7	4.6	2.1	..	..	..	..	..	..
1993-94	-0.3	3.7	0.3	..	..	..	..	..	..
1994-95	9.2	16.5	10.3	..	..	..	..	..	..
1995-96	0.7	1.4	0.8	..	..	..	..	..	..
1996-97	0.2	2.1	0.5	..	..	..	..	..	..
1997-98	20.1	6.9	18.0	..	..	..	..	..	..
MONTHLY									
<b>1996-97</b>									
April	3 015	701	3 716	3 263	673	3 936	3 205	608	3 813
May	3 028	612	3 640	3 075	562	3 637	3 211	599	3 810
June	3 659	780	4 439	3 357	593	3 951	3 230	585	3 815
<b>1997-98</b>									
July	3 351	545	3 896	3 227	539	3 766	3 277	571	3 848
August	3 368	508	3 876	3 274	574	3 848	3 362	563	3 925
September	3 619	555	4 174	3 487	577	4 064	3 468	567	4 036
October	3 775	560	4 335	3 537	573	4 110	3 557	581	4 138
November	3 662	537	4 199	3 604	563	4 167	3 606	601	4 207
December	3 781	702	4 483	3 877	661	4 537	3 601	625	4 226
January	2 883	483	3 366	3 657	643	4 300	3 571	650	4 221
February	3 340	640	3 980	3 332	700	4 033	3 565	665	4 230
March	3 661	687	4 348	3 369	592	3 961	3 624	672	4 296
April	3 385	678	4 063	3 812	785	4 597	3 751	672	4 423
May	3 693	686	4 379	3 836	636	4 472	3 920	669	4 589
June	4 889	872	5 761	4 408	610	5 018	4 094	665	4 759
<b>1998-99</b>									
July	4 411	676	5 087	4 297	687	4 984	4 269	662	4 931
PERCENTAGE CHANGE FROM PREVIOUS MONTH									
<b>1996-97</b>									
April	-0.6	18.2	2.5	5.6	8.2	6.0	0.4	0.0	0.3
May	0.4	-12.7	-2.0	-5.8	-16.5	-7.6	0.2	-1.5	-0.1
June	20.8	27.5	22.0	9.2	5.5	8.6	0.6	-2.3	0.1
<b>1997-98</b>									
July	-8.4	-30.1	-12.2	-3.9	-9.1	-4.7	1.5	-2.4	0.9
August	0.5	-6.8	-0.5	1.5	6.5	2.2	2.6	-1.4	2.0
September	7.5	9.3	7.7	6.5	0.5	5.6	3.2	0.7	2.8
October	4.3	0.9	3.9	1.4	-0.7	1.1	2.6	2.5	2.5
November	-3.0	-4.1	-3.1	1.9	-1.7	1.4	1.4	3.4	1.7
December	3.2	30.7	6.8	7.6	17.4	8.9	-0.1	4.0	0.5
January	-23.8	-31.2	-24.9	-5.7	-2.7	-5.2	-0.8	4.0	-0.1
February	15.9	32.5	18.2	-8.9	8.9	-6.2	-0.2	2.3	0.2
March	9.6	7.3	9.2	1.1	-15.4	-1.8	1.7	1.1	1.6
April	-7.5	-1.3	-6.6	13.1	32.6	16.1	3.5	0.0	3.0
May	9.1	1.2	7.8	0.6	-19.0	-2.7	4.5	-0.4	3.8
June	32.4	27.1	31.6	14.9	-4.1	12.2	4.4	-0.6	3.7
<b>1998-99</b>									
July	-9.8	-22.5	-11.7	-2.5	12.6	-0.7	4.3	-0.5	3.6

Period	INDUSTRY.....			Total	TYPE OF ASSET.....	
	Mining	Manu- facturing	Other selected industries		New buildings and structures	Equipment, plant and machinery
ANNUAL (\$m)						
1992-93	218	564	739	1 522	416	1 105
1993-94	97	613	773	1 484	356	1 128
1994-95	115	829	1 162	2 106	351	1 755
1995-96	196	756	921	1 873	358	1 515
1996-97	489	840	1 251	2 580	594	1 985
1997-98	1 370	791	1 022	3 183	783	2 400
PERCENTAGE CHANGE FROM PREVIOUS YEAR						
1992-93	12.8	-26.1	10.6	-6.4	6.1	-10.4
1993-94	-55.5	8.7	4.6	-2.5	-14.5	2.0
1994-95	18.3	35.2	50.3	41.9	-1.4	55.6
1995-96	70.4	-8.8	-20.7	-11.1	2.0	-13.7
1996-97	149.5	11.1	35.8	37.7	65.9	31.0
1997-98	180.2	-5.8	-18.3	23.4	31.8	20.9
QUARTERLY, ORIGINAL (\$m)						
<b>1996-97</b>						
March	79	198	245	521	130	391
June	267	221	234	720	160	563
<b>1997-98</b>						
September	345	170	201	716	159	557
December	447	265	241	953	196	757
March	360	168	193	721	188	534
June	218	188	386	792	241	551
PERCENTAGE CHANGE FROM PREVIOUS QUARTER, ORIGINAL						
<b>1996-97</b>						
March	-3.7	-15.4	-34.3	-24.3	-24.4	-24.4
June	238.0	11.6	-4.5	38.2	23.1	44.0
<b>1997-98</b>						
September	29.2	-23.1	-14.1	-0.6	-0.6	-1.1
December	29.6	55.9	19.9	33.1	23.3	35.9
March	-19.5	-36.6	-19.9	-24.3	-4.1	-29.5
June	-39.4	11.9	100.0	9.8	28.2	3.2
QUARTERLY, TREND (\$m)						
<b>1996-97</b>						
March	n.a.	n.a.	n.a.	624	153	472
June	n.a.	n.a.	n.a.	698	157	541
<b>1997-98</b>						
September	n.a.	n.a.	n.a.	773	162	611
December	n.a.	n.a.	n.a.	810	181	629
March	n.a.	n.a.	n.a.	811	210	602
June	n.a.	n.a.	n.a.	792	238	553
PERCENTAGE CHANGE FROM PREVIOUS QUARTER, TREND						
<b>1996-97</b>						
March	..	..	..	-0.8	3.4	-1.9
June	..	..	..	11.9	2.6	14.6
<b>1997-98</b>						
September	..	..	..	10.7	3.2	12.9
December	..	..	..	4.8	11.7	2.9
March	..	..	..	0.1	16.0	-4.3
June	..	..	..	-2.3	13.3	-8.1

# 11

## TOURIST ACCOMMODATION

Period	HOTELS WITH FACILITIES...			MOTELS AND GUESTHOUSES..			SERVICED APARTMENTS....		
	Guest rooms	Room occupancy	Takings	Flats, units and houses	Room occupancy	Takings	Guest rooms	Room occupancy	Takings
	no.	%	\$'000	no.	%	\$'000	no.	%	\$'000
.....									
QUARTERLY									
<b>1996-97</b>									
March	3 819	56.3	18 629	5 252	55.8	18 548	626	72.6	3 284
<b>1997-98</b>									
March	3 808	60.1	20 851	5 181	57.4	19 247	726	67.6	3 913
.....									
PERCENTAGE CHANGE FROM PREVIOUS YEAR									
<b>1997-98</b>									
March	-0.3	..	11.9	-1.4	..	3.8	16.0	..	19.2
.....									

Period	HOUSES.....		TOTAL DWELLING UNITS.....		Alterations and additions to residential building	Total residential building	Non-residential building	Total building
	Private sector	Total	Private sector	Total				
	no.	no.	no.	no.				
					\$m	\$m	\$m	\$m
ANNUAL								
1992-93	9 715	10 091	11 548	12 341	133	973	418	1 392
1993-94	9 474	9 905	11 046	11 777	122	961	375	1 336
1994-95	7 765	8 155	9 208	9 762	120	860	493	1 353
1995-96	4 938	5 117	5 760	5 968	119	588	566	1 155
1996-97	5 512	5 608	6 148	6 264	117	632	581	1 213
1997-98	6 187	6 380	6 997	7 215	128	758	602	1 360
MONTHLY, ORIGINAL								
<b>1997-98</b>								
July	572	584	622	634	10.8	61.9	125.1	187.0
August	514	530	552	568	10.1	59.4	63.8	123.2
September	505	527	570	600	10.7	62.5	58.6	121.1
October	523	538	584	599	12.0	63.3	34.1	97.4
November	482	490	544	552	11.1	62.3	64.5	126.7
December	475	482	506	513	10.6	58.6	35.1	93.7
January	365	373	420	431	7.3	44.7	16.1	60.8
February	542	545	663	666	15.6	72.6	41.9	114.5
March	623	671	686	738	10.7	74.3	53.8	128.1
April	461	472	491	502	9.6	53.6	34.6	88.3
May	515	527	588	602	9.2	64.4	38.2	102.6
June	610	641	771	810	10.2	80.3	36.5	116.8
<b>1998-99</b>								
July	654	660	913	921	11.8	90.4	40.2	130.6
MONTHLY, TREND								
<b>1997-98</b>								
July	498	512	553	569	9.7	56.6	79.6	136.2
August	486	502	535	553	9.9	57.1	75.0	132.2
September	480	498	525	543	10.1	57.8	65.6	123.4
October	487	505	533	551	10.3	59.1	54.9	114.0
November	504	522	556	575	10.4	60.8	46.9	107.7
December	520	537	581	599	10.4	62.4	42.5	104.8
January	533	549	597	615	10.2	63.3	40.9	104.2
February	541	556	608	625	10.0	64.2	40.4	104.5
March	545	560	618	635	9.9	65.5	39.0	104.5
April	546	561	633	650	9.9	67.6	37.8	105.4
May	548	563	657	674	10.1	70.4	36.6	107.1
June	550	565	689	705	10.3	73.6	35.7	109.4
<b>1998-99</b>								
July	555	569	722	737	10.6	77.0	34.6	111.6
PERCENTAGE CHANGE FROM PREVIOUS MONTH, TREND								
<b>1997-98</b>								
July	-2.7	-2.1	-2.6	-2.6	-1.0	0.7	2.3	1.6
August	-2.4	-2.0	-3.3	-2.8	2.1	0.9	-5.8	-2.9
September	-1.2	-0.8	-1.9	-1.8	2.0	1.2	-12.5	-6.7
October	1.5	1.4	1.5	1.5	2.0	2.2	-16.3	-7.6
November	3.5	3.4	4.3	4.4	1.0	2.9	-14.6	-5.5
December	3.2	2.9	4.5	4.2	0.0	2.6	-9.4	-2.7
January	2.5	2.2	2.8	2.7	-1.9	1.4	-3.8	-0.6
February	1.5	1.3	1.8	1.6	-2.0	1.4	-1.2	0.3
March	0.7	0.7	1.6	1.6	-1.0	2.0	-3.5	0.0
April	0.2	0.2	2.4	2.4	0.0	3.2	-3.1	0.9
May	0.4	0.4	3.8	3.7	2.0	4.1	-3.2	1.6
June	0.4	0.4	4.9	4.6	2.0	4.5	-2.5	2.1
<b>1998-99</b>								
July	0.9	0.7	4.8	4.5	2.9	4.6	-3.1	2.0

# 13

## BUILDING COMMENCEMENTS

Period	NEW HOUSES.....		TOTAL DWELLING UNITS(a).....				NON-RESIDENTIAL BUILDING.....		
	Private sector	Total	Private sector	Total	New residential building	Alterations and additions to residential building	Private sector	Total	Total building
	no.	no.	no.	no.	\$m	\$m	\$m	\$m	\$m
ANNUAL									
1992-93	9 122	9 416	10 889	11 646	816.2	122.4	205.5	458.7	1 397.2
1993-94	9 159	9 590	10 712	11 501	845.3	126.5	209.9	373.0	1 344.8
1994-95	7 745	8 210	9 132	9 796	765.5	125.3	251.7	518.5	1 409.3
1995-96	4 836	5 070	5 691	5 960	496.5	121.7	452.8	631.8	1 250.0
1996-97	5 057	5 113	5 704	5 790	496.3	116.9	423.4	568.8	1 181.9
QUARTERLY									
<b>1995-96</b>									
March	1 044	1 089	1 237	1 295	109.2	29.4	80.1	139.9	278.4
June	1 153	1 183	1 273	1 307	111.0	28.8	217.7	264.0	403.9
<b>1996-97</b>									
September	1 191	1 207	1 302	1 321	108.7	26.2	67.9	104.2	239.1
December	1 245	1 262	1 513	1 530	133.8	33.8	85.3	113.2	280.8
March	1 099	1 102	1 242	1 247	106.3	26.2	76.6	121.2	253.6
June	1 522	1 541	1 655	1 691	147.5	30.7	193.5	230.2	408.4
<b>1997-98</b>									
September	1 354	1 402.0	1 480	1 541	131.9	31.6	84.5	112.3	275.8
December	1 531	1 588	1 835	1 906	179.8	33.8	139.2	174.1	387.7
March	1 414	1 441	1 555	1 653	150.4	38.9	65.1	92.1	281.3

(a) Includes conversions.

Period	NEW HOUSES...		NEW RESIDENTIAL BUILDING.....		Alterations and additions to residential building	NON-RESIDENTIAL BUILDING.....		TOTAL BUILDING.....	
	Private sector	Total	Private sector	Total		Private sector	Total	Private sector	Total
	\$m	\$m	\$m	\$m		\$m	\$m	\$m	\$m
ANNUAL									
1991-92	591.5	607.5	693.4	748.5	125.1	310.3	484.1	1 127.5	1 357.6
1992-93	647.2	660.9	743.8	780.6	127.1	297.9	570.9	1 166.3	1 478.6
1993-94	719.1	746.4	828.9	876.3	132.0	217.7	462.1	1 177.2	1 470.4
1994-95	659.6	693.6	766.1	816.4	129.4	271.6	476.9	1 164.3	1 422.7
1995-96	441.4	460.5	512.9	534.8	130.6	311.4	542.1	953.2	1 207.5
1996-97	433.9	438.9	485.2	490.4	122.2	444.2	663.3	1 049.8	1 275.9
QUARTERLY									
<b>1995-96</b>									
June	102.6	105.0	117.6	120.3	32.6	88.1	155.6	238.3	308.5
<b>1996-97</b>									
September	97.3	99.3	109.4	111.3	28.0	83.4	143.8	219.4	283.1
December	109.1	110.6	121.3	122.8	35.4	119.6	189.8	276.0	348.0
March	99.9	100.3	114.1	114.6	26.8	100.8	147.8	241.6	289.2
June	127.6	128.7	140.5	141.7	32.0	140.4	181.9	312.8	355.6
<b>1997-98</b>									
September	122.5	125.8	136.3	139.9	32.9	149.8	186.7	318.5	359.4
December	134.0	137.7	152.3	157.1	36.2	157.7	197.7	345.2	391.0
March	129.3	131.6	146.1	148.7	31.3	117.3	147.3	294.6	327.2

Period	Pigmeat	Beef	Mutton	Lamb	Gas	Coal	Sawn timber(a)
	tonnes	tonnes	tonnes	tonnes	m MJ	tonnes	m <sup>3</sup>
ANNUAL							
1991-92	34 538	90 661	72 578	29 941	78 210	2 819 880	271 603
1992-93	38 153	96 338	65 689	39 334	83 000	2 753 610	317 096
1993-94	38 394	94 395	71 354	45 199	89 382	2 643 000	364 961
1994-95	32 063	99 108	66 759	36 147	86 123	2 554 560	392 349
1995-96	31 695	89 704	55 600	37 735	76 074	2 409 120	413 545
1996-97	29 842	85 478	51 778	34 890	76 495	2 633 820	333 691
1997-98	26 384	80 924	58 554	38 224	78 440	n.y.a.	361 257

PERCENTAGE CHANGE FROM PREVIOUS YEAR							
1991-92	-10.6	4.2	10.9	-6.5	6.7	15.5	13.1
1992-93	10.5	6.3	-9.5	31.4	6.1	-2.4	16.7
1993-94	0.6	-2.0	8.6	14.9	7.7	-4.0	15.1
1994-95	-16.5	5.0	-6.4	-20.0	-3.6	-3.3	7.5
1995-96	-1.1	-9.5	-16.7	4.4	-11.7	-5.7	5.4
1996-97	-5.8	-4.7	-6.9	-7.5	0.6	9.3	-19.3
1997-98	-11.6	-5.3	13.1	9.6	2.5	..	8.3

MONTHLY/QUARTERLY							
<b>1996-97</b>							
April	2 507	8 366	5 207	3 485	..	..	..
May	2 827	7 616	3 638	3 453	..	..	..
June	2 532	7 178	2 958	3 288	19 777	720 300	83 742
<b>1997-98</b>							
July	2 446	6 820	1 466	1 448	..	..	..
August	2 665	6 042	4 335	2 380	..	..	..
September	2 320	5 842	5 089	2 766	21 942	752 868	91 537
October	2 263	7 881	5 338	3 846	..	..	..
November	2 273	7 870	5 826	3 226	..	..	..
December	1 765	6 574	5 605	2 891	18 997	610 208	83 957
January	2 018	5 790	6 604	3 092	..	..	..
February	2 586	7 883	6 757	3 552	..	..	..
March	2 126	7 716	6 270	3 917	18 098	718 990	89 540
April	1 823	7 477	4 805	3 740	..	..	..
May	2 300	5 194	2 815	4 040	..	..	..
June	1 799	6 115	3 561	3 326	19 404	n.y.a.	96 223

PERCENTAGE CHANGE FROM PREVIOUS MONTH/QUARTER							
<b>1996-97</b>							
April	13.9	22.0	4.7	20.9	..	..	..
May	12.8	-9.0	-30.1	-0.9	..	..	..
June	-10.4	-5.8	-18.7	-4.8	10.2	5.2	22.4
<b>1997-98</b>							
July	-3.4	-5.0	-50.4	-56.0	..	..	..
August	9.0	-11.4	195.7	64.4	..	..	..
September	-12.9	-3.3	17.4	16.2	10.9	4.5	9.3
October	-2.5	34.9	4.9	39.0	..	..	..
November	0.4	-0.1	9.1	-16.1	..	..	..
December	-22.3	-16.5	-3.8	-10.4	-13.4	-18.9	-8.3
January	14.3	-11.9	17.8	7.0	..	..	..
February	28.1	36.1	2.3	14.9	..	..	..
March	-17.8	-2.1	-7.2	10.3	-4.7	17.8	6.6
April	-14.3	-3.1	-23.4	-4.5	..	..	..
May	26.2	-30.5	-41.4	8.0	..	..	..
June	-21.8	17.7	26.5	-17.7	7.2	..	7.5

(a) From Australian softwood logs only.

Period	Food	Clothing	Housing	Household equipment and operation	Transport- ation	Tobacco and alcohol	Health and personal care	Recreation and education	All groups
ANNUAL AVERAGE (1989-90 = 100)									
1992-93	109.3	107.0	94.3	107.6	115.0	131.2	134.9	110.7	111.2
1993-94	111.7	106.6	92.1	108.0	117.8	141.5	142.7	113.7	113.4
1994-95	115.1	104.9	97.8	109.2	120.2	148.9	151.3	116.3	116.9
1995-96	118.2	105.1	103.6	112.1	124.5	160.1	158.9	118.0	121.2
1996-97	120.8	105.5	98.9	113.4	124.6	165.3	165.4	121.1	122.3
1997-98	122.7	105.7	90.7	113.7	122.1	169.3	165.4	124.7	121.6
PERCENTAGE CHANGE FROM PREVIOUS YEAR, ANNUAL AVERAGE									
1992-93	3.1	1.6	-6.1	0.1	4.1	10.6	5.6	2.8	2.1
1993-94	2.2	-0.4	-2.3	0.4	2.4	7.9	5.8	2.7	2.0
1994-95	3.0	-1.6	6.2	1.1	2.0	5.2	6.0	2.2	3.1
1995-96	2.7	0.2	5.9	2.7	3.6	7.6	5.0	1.5	3.7
1996-97	2.2	0.3	-4.5	1.2	0.0	3.3	4.1	2.6	0.9
1997-98	1.6	0.2	-8.3	0.2	-1.9	2.4	0.0	3.0	-0.6
QUARTERLY (1989-90 = 100.0)									
<b>1996-97</b>									
March	121.2	105.1	97.5	113.3	125.6	165.2	167.7	122.3	122.6
June	121.9	105.2	94.1	113.6	122.7	166.5	168.0	122.9	121.9
<b>1997-98</b>									
September	122.0	105.4	92.2	113.6	123.2	167.2	158.6	123.7	121.2
December	122.0	106.2	90.2	113.6	122.3	168.8	164.1	123.6	121.2
March	122.9	105.1	89.9	113.7	121.2	170.7	167.8	125.5	121.7
June	123.7	105.9	90.3	113.9	121.8	170.5	171.1	126.1	122.4
PERCENTAGE CHANGE FROM SAME QUARTER OF PREVIOUS YEAR									
<b>1996-97</b>									
March	2.5	0.2	-6.2	0.8	1.4	1.8	4.2	2.9	0.8
June	3.0	-0.3	-9.4	1.2	-2.1	1.8	4.6	3.1	-0.1
<b>1997-98</b>									
September	2.3	-0.1	-10.9	0.5	-1.0	1.5	-1.4	3.8	-0.8
December	1.1	0.2	-10.2	-0.2	-2.5	2.4	-0.5	3.2	-1.1
March	1.4	0.0	-7.8	0.4	-3.5	3.3	0.1	2.6	-0.7
June	1.5	0.7	-4.0	0.3	-0.7	2.4	1.8	2.6	0.4
PERCENTAGE CHANGE FROM PREVIOUS QUARTER									
<b>1996-97</b>									
March	0.4	-0.8	-3.0	-0.4	0.1	0.2	1.7	2.1	0.0
June	0.6	0.1	-3.5	0.3	-2.3	0.8	0.2	0.5	-0.6
<b>1997-98</b>									
September	0.1	0.2	-2.0	0.0	0.4	0.4	-5.6	0.7	-0.6
December	0.0	0.8	-2.2	0.0	-0.7	1.0	3.5	-0.1	0.0
March	0.7	-1.0	-0.3	0.1	-0.9	1.1	2.3	1.5	0.4
June	0.7	0.8	0.4	0.2	0.5	-0.1	2.0	0.5	0.6



		QUARTER.....				
		June	Sep	Dec	Mar	June
		1997	1997	1997	1998	1998
Item	Unit	cents	cents	cents	cents	cents
Milk, carton, supermarket sales	1 L	122	122	124	127	127
Cheese, processed, sliced, wrapped	500 g	320	323	322	323	312
Butter	500 g	161	164	167	175	172
Bread, white loaf, sliced, supermarket sales	680 g	160	161	163	165	162
Self-raising flour	2 kg	235	239	236	235	227
Beef						
Rump steak	1 kg	1 141	1 135	1 098	1 197	1 125
Corned silverside	1 kg	602	626	590	596	608
Lamb						
Leg	1 kg	574	565	535	534	569
Loin chops	1 kg	792	794	796	794	800
Forequarter chops	1 kg	547	534	575	577	573
Pork						
Leg	1 kg	574	622	618	601	544
Loin chops	1 kg	792	802	788	812	803
Chicken, frozen	1 kg	370	362	351	362	357
Bacon, middle rashers	250 g pkt	295	321	295	322	302
Sausages	1 kg	360	360	351	357	352
Potatoes	1 kg	108	111	104	69	76
Onions	1 kg	114	127	165	122	111
Peaches, canned	825 g	185	188	185	193	180
Eggs, 55g	doz.	246	239	235	238	234
Sugar, white	2 kg	182	185	183	201	206
Tea	250 g	175	182	183	217	221
Coffee, instant, jar	150 g	539	573	592	588	586
Margarine, polyunsaturated	500 g	133	144	142	141	147
Petrol						
Leaded	1 L	75.4	74.5	75.0	71.5	73.1
Unleaded	1 L	73.0	72.2	72.6	72.0	71.0

## NET MIGRATION.....

<i>Period</i>	<i>Live births(a)</i>	<i>Deaths(a)</i>	<i>Natural increase</i>	<i>Interstate</i>	<i>Overseas(b)</i>	<i>Total increase</i>	<i>Population at end of period(c)</i>
ANNUAL							
1991-92	19 530	11 035	8 532	- 133	2 897	11 296	1 456 523
1992-93	19 686	11 163	8 403	-4 650	1 546	5 299	1 460 730
1993-94	20 036	11 743	7 949	-3 466	1 994	6 477	1 466 127
1994-95	19 569	11 501	7 902	-6 529	2 883	4 256	1 469 411
1995-96	18 959	11 294	7 645	-6 238	4 119	5 526	1 474 253
1996-97	18 945	11 683	7 258	-5 185	3 480	5 553	1 479 806
MONTHLY/QUARTERLY							
<b>1996-97</b>							
September	1 464	977	1 575	-1 746	902	731	1 474 984
October	1 779	1 196	..	..	..	..	..
November	1 536	835	..	..	..	..	..
December	1 424	920	1 780	-1 565	1 003	1 218	1 476 202
January	1 582	911	..	..	..	..	..
February	1 498	827	..	..	..	..	..
March	1 301	758	1 880	-1 368	1 228	1 740	1 477 942
April	1 673	935	..	..	..	..	..
May	1 805	1 080	..	..	..	..	..
June	1 492	959	2 023	-506	347	1 864	1 479 806
<b>1997-98</b>							
July	1 624	1 099	..	..	..	..	..
August	1 448	1 066	..	..	..	..	..
September	1 481	1 068	1 322	-654	1 124	1 792	1 481 598
October	1 581	1 116	..	..	..	..	..
November	1 460	877	..	..	..	..	..
December	1 459	960	1 544	-871	598	1 271	1 482 869

(a) Registrations.

(b) Includes category jumping.

Period	EMPLOYED FULL-TIME.....		EMPLOYED PART-TIME.....		TOTAL EMPLOYED.....		UNEMPLOYED..		LABOUR FORCE.....	
	Males	Females	Males	Females	Males	Females	Males	Females	Males	Females
ANNUAL AVERAGE ('000)										
1992-93	322.2	143.2	39.2	126.8	361.4	270.0	51.9	29.9	413.3	299.9
1993-94	322.0	146.3	40.0	127.0	362.0	273.3	47.3	29.9	409.3	303.2
1994-95	323.1	151.5	42.6	131.3	365.7	282.8	44.6	28.7	410.3	311.5
1995-96	325.2	150.0	45.5	136.7	370.7	286.7	42.6	26.0	413.2	312.7
1996-97	320.8	150.5	48.6	140.7	369.4	291.2	42.1	27.5	411.5	318.7
1997-98	321.9	146.3	49.0	136.3	370.9	282.8	42.5	28.8	413.5	311.4
MONTHLY, ORIGINAL ('000)										
<b>1997-98</b>										
August	323.3	143.1	50.0	142.9	373.3	290.4	42.1	25.6	415.3	311.6
September	325.0	144.7	50.4	145.2	375.3	286.1	44.5	27.7	419.9	317.5
October	324.1	145.2	49.6	143.6	373.7	289.9	43.2	26.6	416.9	315.4
November	324.0	147.8	49.2	142.4	373.2	290.3	42.5	26.7	415.8	317.0
December	329.8	151.7	47.1	135.8	376.9	287.5	42.8	28.3	419.7	315.8
January	325.1	147.6	43.3	127.3	368.4	274.9	46.1	32.8	414.5	307.7
February	318.2	148.2	50.0	132.1	368.2	280.2	45.8	31.1	414.0	311.3
March	317.2	148.7	50.4	129.6	367.6	278.2	41.7	31.9	409.3	310.2
April	317.4	145.6	52.2	133.3	369.7	278.9	39.1	28.6	408.8	307.5
May	314.6	142.9	48.7	132.0	363.3	274.9	42.5	29.9	405.8	304.8
June	318.5	141.1	49.9	131.4	368.3	272.5	39.0	29.1	407.3	301.6
<b>1998-99</b>										
July	322.1	145.5	44.7	127.8	366.8	273.2	42.6	26.6	409.4	299.8
August	320.8	144.2	47.1	130.9	367.9	275.1	42.9	29.2	410.8	304.2
MONTHLY, TREND ('000)										
<b>1997-98</b>										
August	324.6	147.1	49.9	141.2	374.5	288.3	43.4	27.8	417.9	316.1
September	324.8	146.2	49.9	142.1	374.7	288.3	43.4	27.8	418.1	316.1
October	324.7	145.8	49.5	142.3	374.2	288.1	43.4	27.9	417.6	316.0
November	324.2	146.1	48.9	141.1	373.1	287.2	43.4	28.0	416.5	315.2
December	323.4	146.9	48.4	138.9	371.8	285.8	43.2	28.3	415.0	314.1
January	322.3	147.6	48.1	136.3	370.4	283.9	42.8	28.7	413.2	312.6
February	320.9	147.7	48.2	133.8	369.1	281.5	42.2	29.1	411.3	310.6
March	319.6	147.1	48.4	131.7	368.0	278.8	41.7	29.4	409.7	308.2
April	318.7	146.3	48.7	130.2	367.4	276.5	41.6	29.6	409.0	306.1
May	318.6	145.4	48.6	129.3	367.2	274.7	41.8	29.7	409.0	304.4
June	319.0	144.9	48.3	128.4	367.3	273.3	42.2	29.9	409.5	303.2
<b>1998-99</b>										
July	319.7	144.5	47.9	127.9	367.6	272.4	42.7	30.0	410.3	302.4
August	320.9	144.4	47.1	127.6	368.0	272.0	43.2	30.2	411.2	302.2
PERCENTAGE CHANGE FROM PREVIOUS MONTH, TREND										
<b>1997-98</b>										
August	0.2	-0.8	0.2	0.8	0.2	0.0	0.0	0.4	0.1	0.0
September	0.1	-0.6	0.0	0.6	0.1	0.0	0.0	0.0	0.0	0.0
October	0.0	-0.3	-0.8	0.1	-0.1	-0.1	0.0	0.4	-0.1	0.0
November	-0.2	0.2	-1.2	-0.8	-0.3	-0.3	0.0	0.4	-0.3	-0.3
December	-0.2	0.5	-0.8	-1.6	-0.3	-0.5	-0.5	1.1	-0.3	-0.4
January	-0.3	0.5	-0.6	-1.9	-0.4	-0.7	-0.9	1.4	-0.4	-0.5
February	-0.4	0.1	0.2	-1.8	-0.4	-0.8	-1.4	1.4	-0.5	-0.6
March	-0.4	-0.4	0.4	-1.6	-0.3	-1.0	-1.2	1.0	-0.4	-0.8
April	-0.3	-0.5	0.6	-1.1	-0.2	-0.8	-0.2	0.7	-0.2	-0.7
May	0.0	-0.6	-0.2	-0.7	-0.1	-0.7	0.5	0.3	0.0	-0.6
June	0.1	-0.3	-0.6	-0.7	0.0	-0.5	1.0	0.7	0.1	-0.4
<b>1998-99</b>										
July	0.2	-0.3	-0.8	-0.4	0.1	-0.1	1.2	0.3	0.2	-0.3
August	0.4	-0.1	-1.7	-0.2	0.1	-0.1	1.2	0.7	0.2	-0.1

(a) Population aged 15 and over.

Period	CIVILIAN POPULATION....		UNEMPLOYMENT RATE.....				PARTICIPATION RATE..		
	Males aged 15 and over	Females aged 15 and over	Persons aged 15-19	Males all ages	Females all ages	Persons all ages	Males	Females	Persons
	'000	'000	%	%	%	%	%	%	%
ANNUAL AVERAGE									
1992-93	567.4	588.9	26.6	12.6	10.0	11.5	72.8	51.0	61.7
1993-94	570.6	592.0	28.3	11.5	9.8	10.8	71.7	51.2	61.3
1994-95	573.7	594.7	25.2	10.9	9.2	10.2	71.5	52.4	61.8
1995-96	576.2	597.1	27.2	10.3	8.3	9.5	71.7	52.4	61.9
1996-97	579.8	600.6	23.7	10.2	8.6	9.5	71.0	53.1	61.9
1997-98	583.9	604.5	23.2	10.3	9.2	9.8	70.8	51.5	61.0
PERCENTAGE CHANGE FROM PREVIOUS YEAR									
1992-93	0.6	0.6	..	..	..	..	..	..	..
1993-94	0.6	0.6	..	..	..	..	..	..	..
1994-95	0.6	0.5	..	..	..	..	..	..	..
1995-96	0.4	0.5	..	..	..	..	..	..	..
1996-97	0.6	0.4	..	..	..	..	..	..	..
1997-98	0.7	0.6	..	..	..	..	..	..	..
MONTHLY, ORIGINAL									
<b>1996-97</b>									
May	581.1	601.8	23.7	10.6	8.2	9.6	71.2	52.4	61.6
June	581.5	602.2	24.3	10.0	8.4	9.3	71.4	53.1	62.1
<b>1997-98</b>									
July	581.9	602.6	21.6	9.9	8.5	9.3	71.2	52.5	61.7
August	582.3	602.9	21.2	10.1	8.2	9.3	71.3	51.7	61.3
September	582.7	603.3	23.2	10.6	8.7	9.8	72.1	52.6	62.2
October	583.1	603.7	22.5	10.4	8.4	9.5	71.5	52.2	61.7
November	583.6	604.1	20.9	10.2	8.4	9.5	71.3	52.5	61.7
December	584.0	604.5	23.3	10.2	8.9	9.7	71.9	52.2	61.9
January	584.3	604.8	26.5	11.1	10.7	10.9	70.9	50.9	60.7
February	584.5	605.1	24.8	11.1	10.0	10.6	70.8	51.5	61.0
March	584.8	605.3	26.1	10.2	10.3	10.2	70.0	51.2	60.5
April	585.1	605.6	23.0	9.6	9.3	9.4	69.9	50.8	60.2
May	585.4	605.9	24.8	10.5	9.8	10.2	69.3	50.3	59.7
June	585.6	606.2	19.9	9.6	9.7	9.6	69.6	49.8	59.5
<b>1997-98</b>									
July	585.9	606.5	23.0	10.4	8.9	9.8	69.9	49.4	59.5
August	586.1	606.8	23.3	10.4	9.6	10.1	70.1	50.1	59.9
MONTHLY, TREND									
<b>1996-97</b>									
May	n.a.	n.a.	n.a.	10.4	8.7	9.7	71.4	52.8	62.0
June	n.a.	n.a.	n.a.	10.4	8.7	9.7	71.6	52.6	61.9
<b>1997-98</b>									
July	n.a.	n.a.	n.a.	10.4	8.8	9.7	71.7	52.5	61.9
August	n.a.	n.a.	n.a.	10.4	8.8	9.7	71.8	52.4	61.9
September	n.a.	n.a.	n.a.	10.4	8.8	9.7	71.7	52.4	61.9
October	n.a.	n.a.	n.a.	10.4	8.8	9.7	71.6	52.3	61.8
November	n.a.	n.a.	n.a.	10.4	8.9	9.8	71.4	52.2	61.6
December	n.a.	n.a.	n.a.	10.4	9.0	9.8	71.1	52.0	61.3
January	n.a.	n.a.	n.a.	10.4	9.2	9.9	70.7	51.7	61.4
February	n.a.	n.a.	n.a.	10.3	9.4	9.9	70.4	51.3	61.0
March	n.a.	n.a.	n.a.	10.2	9.5	9.9	70.1	50.9	60.7
April	n.a.	n.a.	n.a.	10.2	9.7	10.0	69.9	50.5	60.3
May	n.a.	n.a.	n.a.	10.2	9.8	10.0	69.9	50.2	60.1
June	n.a.	n.a.	n.a.	10.3	9.9	10.1	69.9	50.0	59.9
<b>1997-98</b>									
July	n.a.	n.a.	n.a.	10.4	9.9	10.2	70.0	49.9	59.8
August	n.a.	n.a.	n.a.	10.5	10.0	10.3	70.2	49.8	59.8

(a) Population aged 15 and over.

Period	FULL-TIME ADULTS ORDINARY TIME EARNINGS			FULL-TIME ADULTS TOTAL EARNINGS.....			ALL EMPLOYEES TOTAL EARNINGS.....		
	Males	Females	Persons	Males	Females	Persons	Males	Females	Persons
ANNUAL AVERAGE (\$ per week)									
1992-93	610.10	534.90	585.40	646.40	546.80	613.70	560.00	382.60	477.40
1993-94	625.10	547.60	600.00	667.50	560.10	632.70	595.10	396.60	503.30
1994-95	632.70	559.10	608.20	681.70	572.50	645.30	599.90	411.90	513.40
1995-96	653.80	555.90	622.80	703.20	568.50	660.10	620.10	403.90	520.70
1996-97	678.20	575.10	644.30	735.10	589.40	687.20	636.90	408.70	529.80
1997-98	705.60	606.05	670.53	755.05	619.33	707.20	646.28	438.50	545.70
PERCENTAGE CHANGE FROM PREVIOUS YEAR									
1992-93	3.7	2.1	3.1	3.4	2.4	3.0	-0.8	-1.1	-1.3
1993-94	2.5	2.4	2.5	3.3	2.4	3.1	6.3	3.7	5.4
1994-95	1.2	2.1	1.4	2.1	2.2	2.0	0.8	3.9	2.0
1995-96	3.3	-0.6	2.4	3.1	-0.7	2.3	3.4	-1.9	1.4
1996-97	3.7	3.5	3.5	4.5	3.7	4.1	2.7	1.2	1.8
1997-98	4.0	5.4	4.1	2.7	5.1	2.9	1.5	7.3	3.0
QUARTERLY (\$ per week)									
<b>1996-97</b>									
15 November	669.60	575.30	639.50	728.30	591.80	684.80	626.80	402.30	522.20
21 February	685.60	578.20	649.70	741.90	594.00	692.40	639.80	409.50	530.80
16 May	690.90	584.50	655.70	750.00	597.20	699.30	652.30	419.50	542.50
<b>1997-98</b>									
15 August	703.90	583.70	663.40	756.20	593.50	701.40	651.00	420.00	542.50
21 November	689.70	594.20	655.00	739.90	607.40	691.80	631.70	433.90	533.90
20 February	715.10	626.20	683.60	764.60	642.10	721.20	656.10	447.70	553.60
15 May	713.80	620.10	680.10	759.50	634.30	714.40	646.30	452.40	552.80
PERCENTAGE CHANGE FROM CORRESPONDING REFERENCE DATE IN PREVIOUS YEAR									
<b>1996-97</b>									
15 November	3.4	4.8	3.8	5.1	5.5	5.2	3.2	1.5	2.3
21 February	4.1	3.8	3.7	4.0	4.3	3.8	1.3	1.8	0.7
16 May	3.3	4.9	3.5	4.0	4.4	3.7	1.8	2.7	1.5
<b>1997-98</b>									
15 August	5.6	3.8	4.9	5.0	3.3	4.3	3.6	4.1	3.6
21 November	3.0	3.3	2.4	1.6	2.6	1.0	0.8	7.9	2.2
20 February	4.3	8.3	5.2	3.1	8.1	4.2	2.5	9.3	4.3
15 May	3.3	6.1	3.7	1.3	6.2	2.2	-0.9	7.8	1.9
PERCENTAGE CHANGE FROM PREVIOUS REFERENCE DATE									
<b>1996-97</b>									
15 November	0.4	2.3	1.1	1.1	3.0	1.9	-0.3	-0.3	-0.3
21 February	2.4	0.5	1.6	1.9	0.4	1.1	2.1	1.8	1.6
16 May	0.8	1.1	0.9	1.1	0.5	1.0	2.0	2.4	2.2
<b>1997-98</b>									
15 August	1.9	-0.1	1.2	0.8	-0.6	0.3	-0.2	0.1	0.0
21 November	-2.0	1.8	-1.3	-2.2	2.3	-1.4	-3.0	3.3	-1.6
20 February	3.7	5.4	4.4	3.3	5.7	4.2	3.9	3.2	3.7
15 May	-0.2	-1.0	-0.5	-0.7	-1.2	-0.9	-1.5	1.0	-0.1

SECURED HOUSING  
FINANCE  
COMMITMENTS.....

Period	Dwelling units	Value	Alterations and additions	Personal finance commitments	Commercial finance commitments	Lease finance commitments
	no.	\$m	\$m	\$m	\$m	\$m
ANNUAL						
1992-93	36 960	2 569.5	102.8	1 656.9	5 122.5	249.5
1993-94	45 725	3 387.9	221.8	1 840.3	5 467.2	250.6
1994-95	36 429	2 879.7	242.2	2 152.2	5 405.6	271.4
1995-96	38 707	2 982.2	240.7	2 215.5	6 516.2	265.7
1996-97	36 661	2 956.1	188.1	2 469.2	6 092.4	232.0
1997-98	37 379	3 129.7	139.5	2 763.9	6 486.4	267.3

PERCENTAGE CHANGE FROM PREVIOUS YEAR

1992-93	16.4	23.3	15.8	13.7	-23.2	-2.6
1993-94	23.7	31.9	115.7	11.1	6.7	0.5
1994-95	-20.3	-15.0	9.2	16.9	-1.1	8.3
1995-96	6.3	3.6	-0.6	2.9	20.5	-2.1
1996-97	-5.3	-0.9	-21.9	11.5	-6.5	-12.7
1997-98	-2.0	5.9	-25.8	11.9	6.5	15.2

MONTHLY

<b>1996-97</b>						
May	3 228	264.5	14.8	225.2	561.6	20.7
June	3 172	253.3	11.9	249.8	497.9	30.6
<b>1997-98</b>						
July	3 004	243.4	10.8	278.3	640.6	29.8
August	3 085	251.1	10.4	204.6	377.8	21.8
September	3 039	253.3	9.9	220.1	557.5	21.7
October	3 173	267.7	13.3	221.1	619.2	21.6
November	3 033	257.8	11.5	219.7	452.4	17.8
December	3 212	275.3	10.1	233.3	831.4	20.0
January	2 515	207.1	8.6	196.5	378.8	15.3
February	3 107	254.1	10.3	209.4	409.2	18.6
March	3 349	282.8	15.8	250.9	518.2	24.2
April	3 227	271.5	12.7	227.6	466.3	16.1
May	3 054	259.8	12.1	235.6	456.3	23.0
June	3 581	307.0	14.0	265.9	779.2	37.5
<b>1998-99</b>						
July	3 204	274.0	12.0	252.6	501.5	32.4

PERCENTAGE CHANGE FROM PREVIOUS MONTH

<b>1996-97</b>						
May	-2.7	-2.2	-4.3	-0.8	15.2	-4.2
June	-1.7	-4.2	-19.8	10.9	-11.3	47.6
<b>1997-98</b>						
July	-5.3	-3.9	-9.0	11.4	28.7	-2.5
August	2.7	3.1	-3.9	-26.5	-41.0	-27.1
September	-1.5	0.9	-4.5	7.6	47.6	-0.4
October	4.4	5.7	33.9	0.4	11.1	-0.4
November	-4.4	-3.7	-13.1	-0.6	-26.9	-17.7
December	5.9	6.8	-12.9	6.2	83.8	12.4
January	-21.7	-24.8	-14.3	-15.8	-54.4	-23.5
February	23.5	22.7	19.4	6.6	8.0	21.6
March	7.8	11.3	53.7	19.9	26.6	30.3
April	-3.6	-4.0	-20.0	-9.3	-10.0	-33.4
May	-5.4	-5.1	-4.7	3.5	-2.1	42.9
June	17.3	19.0	16.1	12.9	70.8	62.7
<b>1998-99</b>						
July	-10.5	-10.7	-14.3	-5.0	-35.6	-13.7

## PUBLICATIONS SOURCE INDEX

- (1) *Australian National Accounts, Quarterly State Details* (Cat. no. 5206.0.40.001)
- (2) *International Merchandise Trade, Australia* (Cat. no. 5422.0) Quarterly
- (3) *Retail Trade, Australia* (Cat. no. 8501.0) Monthly
- (4) *New Motor Vehicles Registrations, Australia, Preliminary* (Cat. no. 9301.0)  
Monthly
- (5) *State Estimates of Private New Capital Expenditure* (Cat. no. 5646.0) Quarterly
- (6) *Tourist Accommodation, Australia* (Cat. no. 8635.0) Quarterly
- (7) *Building Approvals, Australia* (Cat. no. 8731.0) Monthly
- (8) *Building Activity, Australia* (Cat. no. 8752.0) Quarterly
- (8a) *Building Activity, Australia, Dwelling Unit Commencements, Preliminary* (Cat. no. 8750.0) Quarterly
- (9) *Engineering Construction Activity, Australia* (Cat. no. 8762.0) Quarterly
- (10) *Manufacturing Production, Australia, Preliminary* (Cat. no. 8301.0)  
Monthly
- (11) *Livestock Products, Australia* (Cat. no. 7215.0) Monthly
- (12) *Actual and Expected Private Mineral Exploration, Australia* (Cat. no. 8412.0)  
Quarterly
- (13) *Consumer Price Index* (Cat. no. 6401.0) Quarterly
- (14) *Price Index of Materials Used in House Building, Six State Capital Cities and Canberra* (Cat. no. 6408.0) Monthly
- (15) *Price Index of Materials Used in Building Other Than House Building, Six State Capital Cities and Canberra* (Cat. no. 6407.0) Monthly
- (16) *House Price Indexes: Eight Capital Cities* (Cat. no. 6416.0) Quarterly
- (17) *Australian Demographic Statistics* (Cat. no. 3101.0) Quarterly
- (18) *Labour Force, Australia, Preliminary* (Cat. no. 6202.0) Monthly
- (19) *Job Vacancies and Overtime, Australia* (Cat. no. 6354.0) Quarterly
- (20) *Industrial Disputes, Australia* (Cat. no. 6321.0) Monthly
- (21) Unpublished overseas arrival and departure statistics on microfiche
- (22) *Average Weekly Earnings, States and Australia* (Cat. no. 6302.0) Quarterly
- (23) *Wage Cost Index, Australia* (Cat. no. 6345.0) Quarterly
- (24) *Housing Finance for Owner Occupation, Australia* (Cat. no. 5609.0) Monthly
- (25) Unpublished statistics available from PC AUSSTATS
- (26) *Reserve Bank of Australia Bulletin*

**SELF-HELP ACCESS TO STATISTICS**

*PHONE* Call 1900 986 400 for the latest statistics on CPI, Labour Force, Earnings, National Accounts, Balance of Payments and other topics. (Call cost is 75c per minute)

*INTERNET* <http://www.abs.gov.au>

*LIBRARY* A range of ABS publications is available from public and tertiary libraries Australia wide. Contact your nearest library to determine whether it has the ABS statistics you require.

**WHY NOT SUBSCRIBE?**

*PHONE* +61 1300 366 323

*FAX* +61 3 9615 7848

**CONTACTING THE ABS**

ABS provides a range of services, including: a telephone inquiry service; information consultancy tailored to your needs; survey, sample and questionnaire design; survey evaluation and methodological reviews; and statistical training.

<i>INQUIRIES</i>	<i>By phone</i>	<i>By fax</i>
Canberra	02 6252 6627	02 6253 1404
Sydney	02 9268 4611	02 9268 4668
Melbourne	03 9615 7755	03 9615 7798
Brisbane	07 3222 6351	07 3222 6283
Perth	08 9360 5140	08 9360 5955
Adelaide	08 8237 7400	08 8237 7566
Hobart	03 6222 5800	03 6222 5995
Darwin	08 8943 2111	08 8981 1218

*POST* Client Services, ABS, PO Box 10, Belconnen, ACT 2616

*EMAIL* [client.services@abs.gov.au](mailto:client.services@abs.gov.au)



2130740010989  
ISSN 1039-8880

RRP \$19.50